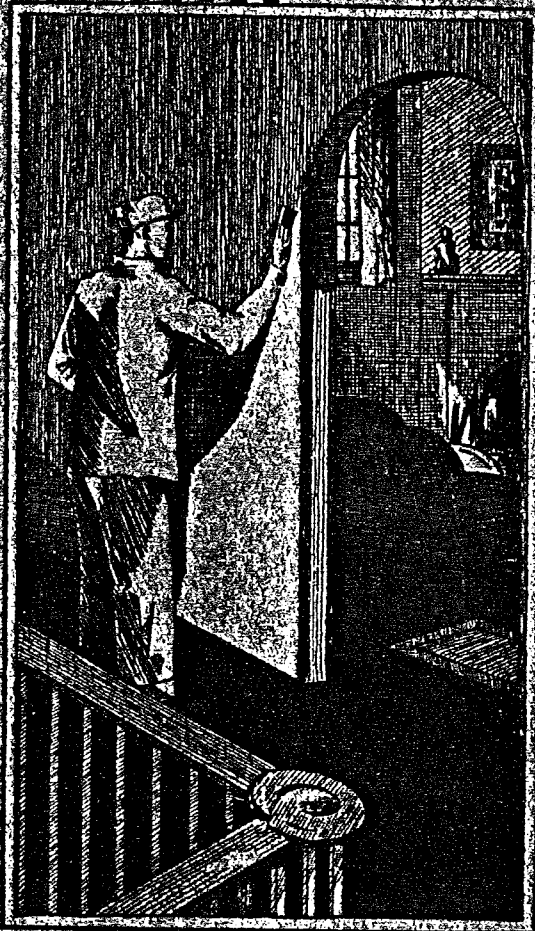


As the years roll by
It's the Paint you use
that tells the story



Only good paint or good varnish, not just ordinary paint or varnish, gives the finest old homes the same goodness and beauty that they possessed when built many years ago. A good paint preserves—it adds durability and beauty to a home. Great Lakes paints and varnishes have preserved some of the finest homes built—homes that have weathered many long years.

G. L. White Enamel
G. L. Enamel Undercoater
G. L. Floor Varnish
G. L. Exterior Spa
G. L. Interior Finish
G. L. Penetrex Oil Stain
G. L. Mulehide Wall Sealer
G. L. One Coat White
G. L. Stippletex

The practical painter will find the Great Lakes paint and varnish line of products complete in every respect. Bulletins will be sent upon request.



GREAT LAKES VARNISH WORKS, INC.
2215 NORTH CRAWFORD AVENUE
CHICAGO, ILLINOIS

Elmhurst, Illinois

PLAN SERVICE

HOMES of to-day have achieved a standard of excellence and beauty and are now built to express a definite architectural motif. Such homes embody the distinctive personality of their owners, and radiate a pleasing charm in outward appearance — they include a comfortable, practical and efficient room arrangement.

Herein will be found groups of designs of English, French, Colonial and Spanish styles, with suggestions for the interior and exterior treatment, to best harmonize with the traditional characteristics of each period.

STOCK PLANS. The price of each plan quoted in this book includes three complete sets of blue prints of working drawings. Duplicate sets cost \$1.00 per set if ordered with original order.

SPECIFICATIONS. Stock specifications are furnished for \$5.00 for a set of three.

SPECIAL PLAN SERVICE. Should you desire to build exactly from your own ideas, a special design covering these ideas will be made for you. Make a rough sketch of what you want, give size, arrangement of rooms, and other details, and the amount you expect to spend. A deposit of \$25.00 should accompany this information. Pencil drawings will then be submitted for approval together with the price of the complete plans. Alter these sketches until they meet with your requirements. I will then finish up all necessary elevations, floor plans and other details.

HOW TO ORDER. Order stock plans by number, giving your post office address. Make certified checks, money orders, etc., payable to Fred La Fave.

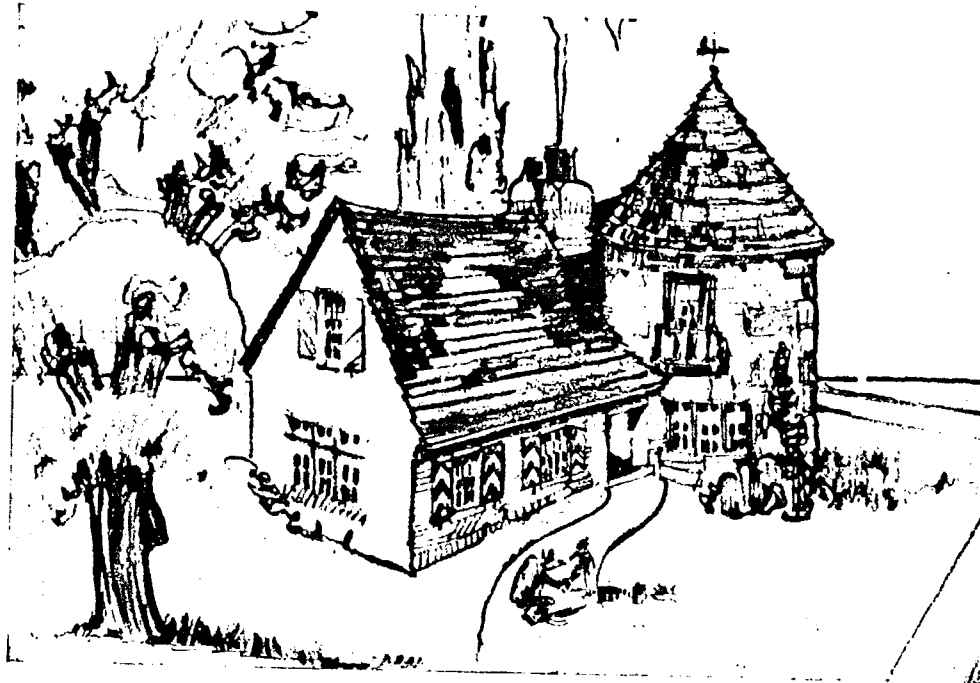
Designers never slavishly copy a design, but use in their own way, certain forms that determine the style. This gives individuality to a building, that otherwise it would not have. Therefore the term style applied to the designs in this book must be taken in rather an elastic way.

FRED LA FAVE, Designer
174 W. ST. CHARLES ROAD • ELMHURST, ILLINOIS

Culotta
1802 Lake. call

THIS COPY
\$ 1 . 5 0

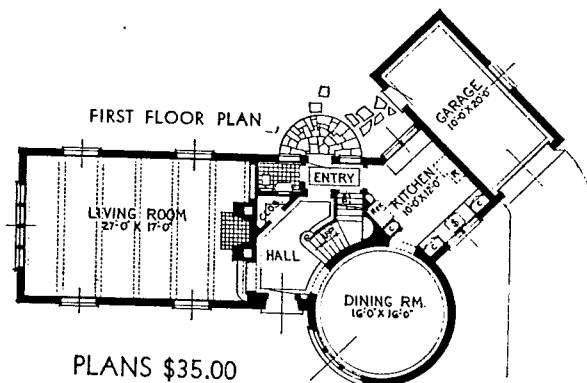
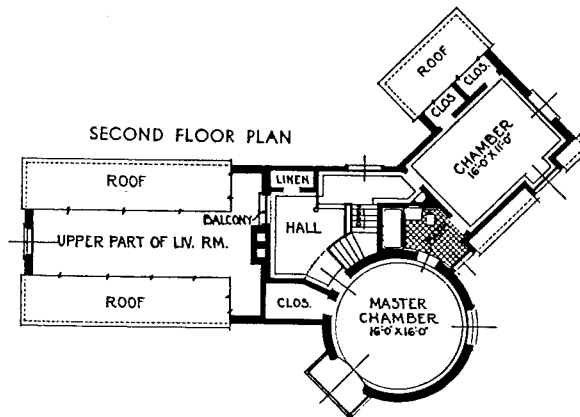
COPYRIGHT 1932
FRED LAFAVE



PLAN No. 119

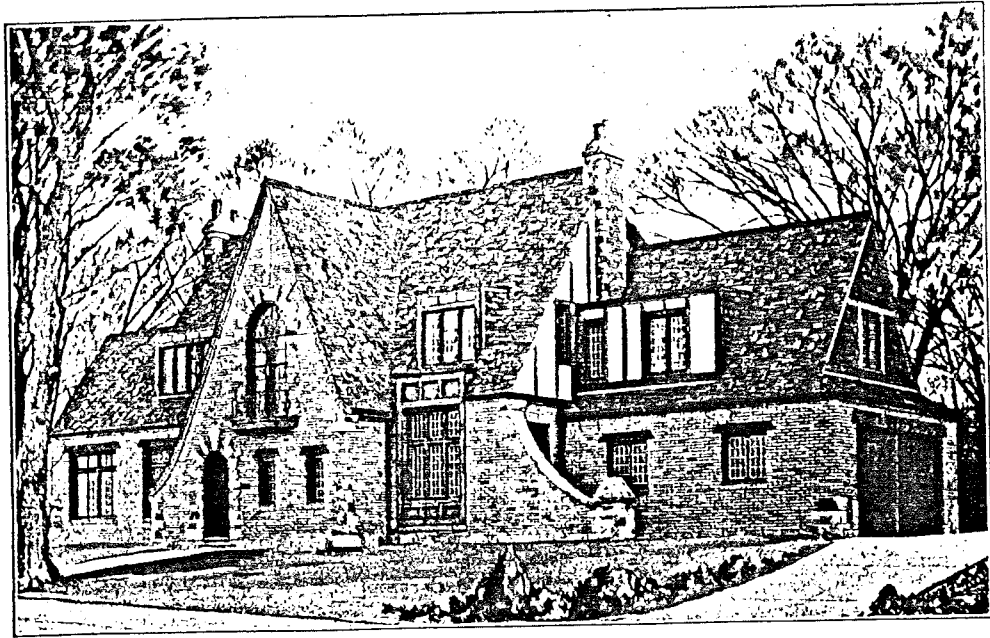
AN ARCHITECTURAL GEM

THIS design is peculiarly attractive in that it is different from the regular stereotyped designs. It is original. The beautiful lines of the roofs—the wide chimney and the unique wing, form a picturesque ensemble and make this home a distinguishing mark in any locality. The interior arrangement provides an artistic and economical use of space. The



PLANS \$35.00

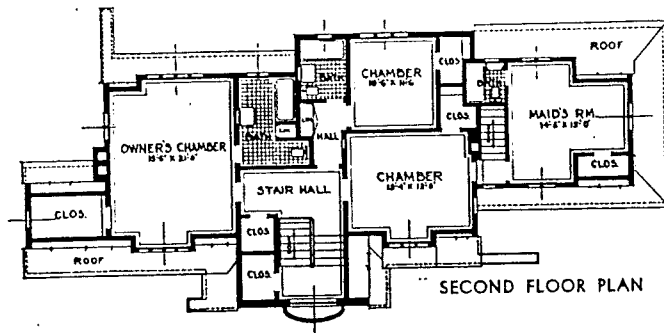
dining room and master chamber echoes with individuality. The graceful stairway winding its way upward to a balcony overlooking the stately living room is a delightful, original, and distinguished piece of design, well handled. Without a question you would enjoy a home like this.



PLAN No. 28

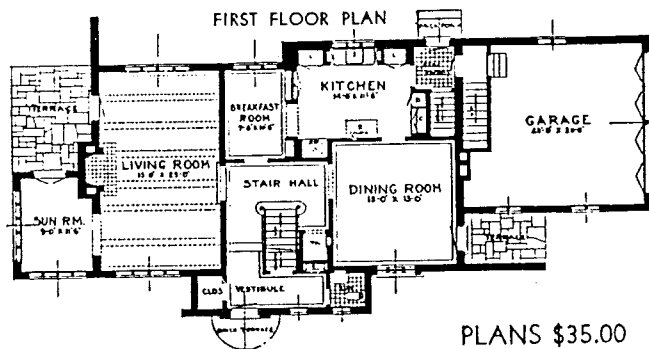
HOME OF J. G. SHILVOCK

391 Prospect St., Elmhurst, Ill.



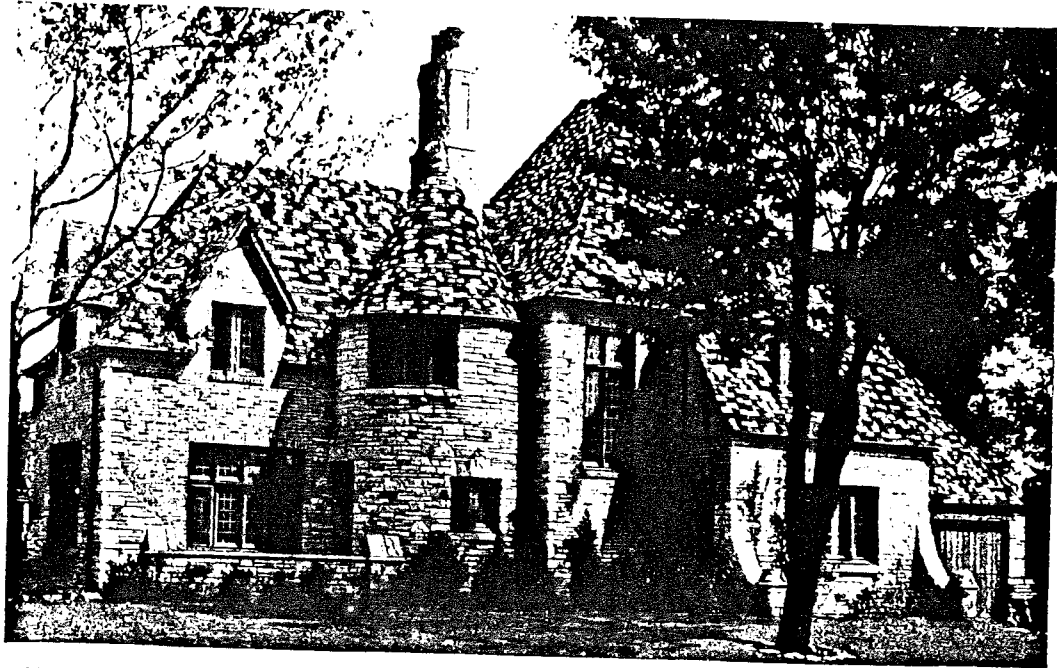
HERE is a charming seven room home built of a variety of materials beautifully combined. It produces a simulation of age and virtually welds the house to the site. The brick and stucco are of an uneven, rough texture, and the half-timbered work is adzed and antiqued, to simulate the old half-timber work of England.

Visualize this home, constructed of mellow stone with tan and greenish blend brick, a soft shade of cream stucco, weathered half-timbering and a variegated reddish brown roof. It's the kind of a home every one would enjoy.



PLANS \$35.00

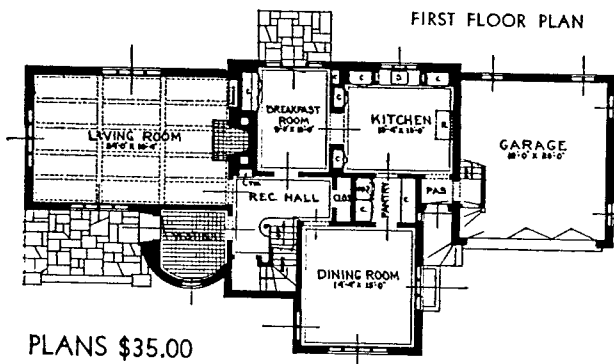
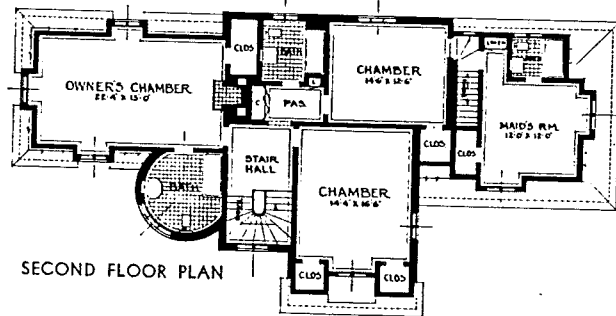
ca, 1985 Home of the Robert Carlsons
391 Prospect, Elmhurst



PLAN No. 30

REMINISCENT OF OLD FRANCE

HERE is a home, typical of old France. The characteristic tower and weather vane, and the bell shaped entrance to the circular vestibule are all in keeping with the old traditions. One of the finest qualities in the architecture of this house is the mellowness that is achieved through the effective use of stone and brick.

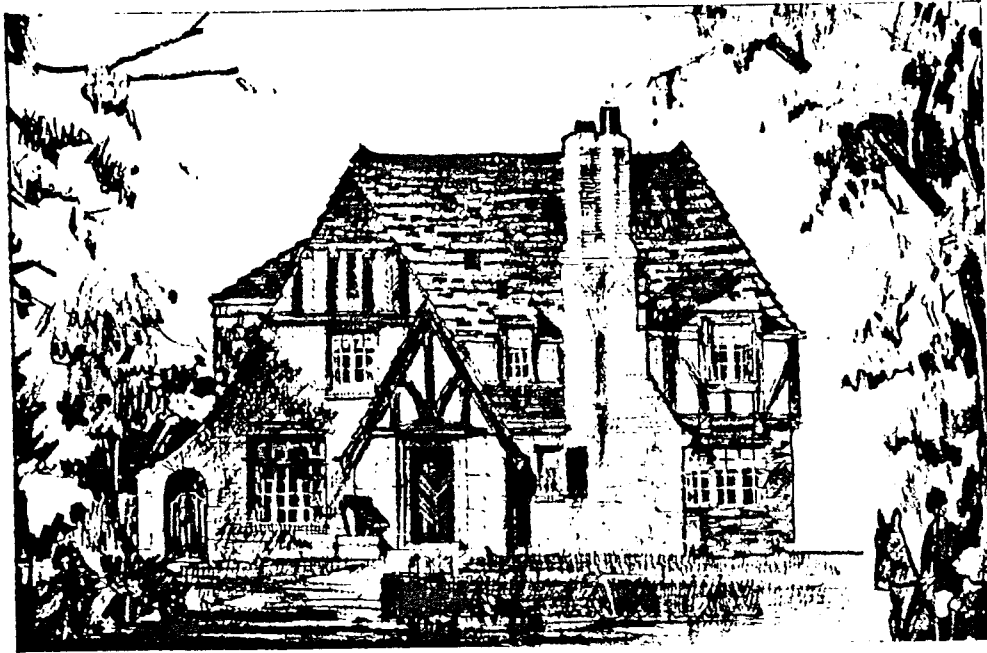


PLANS \$35.00

It is the sort of home that will age gracefully. Each face of the house is the result of nicely studied composition; for instance, the windows are so spaced to perfectly harmonize with the interior arrangement.

The walls of the living room and owner's chamber are treated in softly modeled plaster and form a fine background for the furniture.

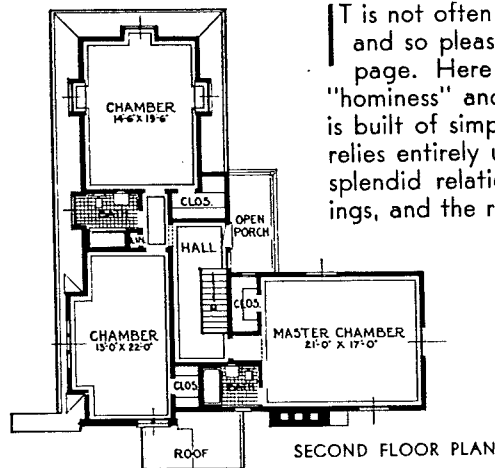
(ca. 1935) Home of the Anthony Corrados
417 Prospect, Elmhurst.



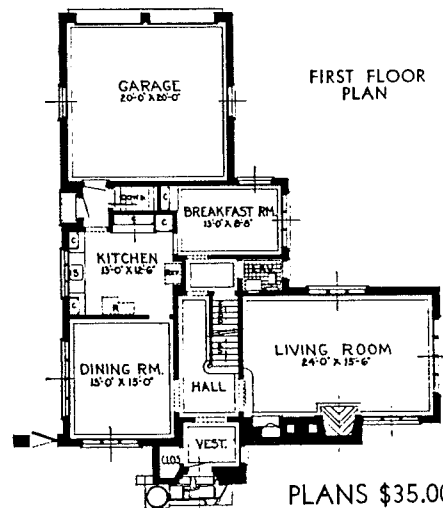
PLAN No. 63

QUIET ENGLISH DIGNITY

It is not often we find a small home so sincere in design and so pleasing to plan as the home shown on this page. Here is a home built with the idea of frank "hominess" and arranged for ease in housekeeping — it is built of simple materials, graciously used. The design relies entirely upon the frank use of these materials with splendid relations between the wall surfaces and openings, and the roof masses.



A few ornamental accents such as a delightful informal entrance, quaint dormers breaking the roof surfaces at intervals, gable and wall projections, adzed timbers and the gateway leading to the kitchen entrance, all add interest to the effect. The garage has been placed adjoining the house and gives added length to the entire composition.

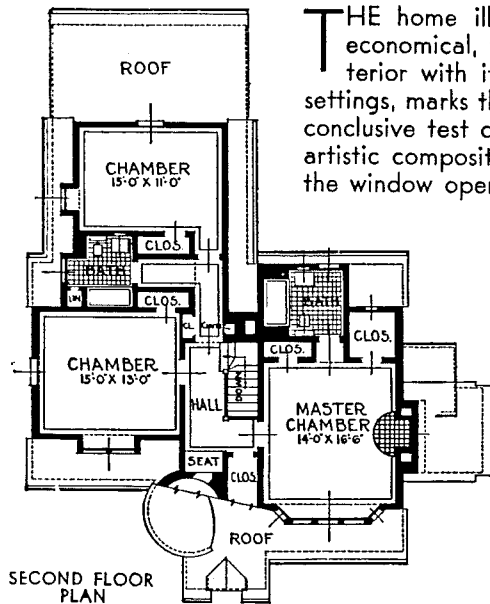




PLAN No. 61

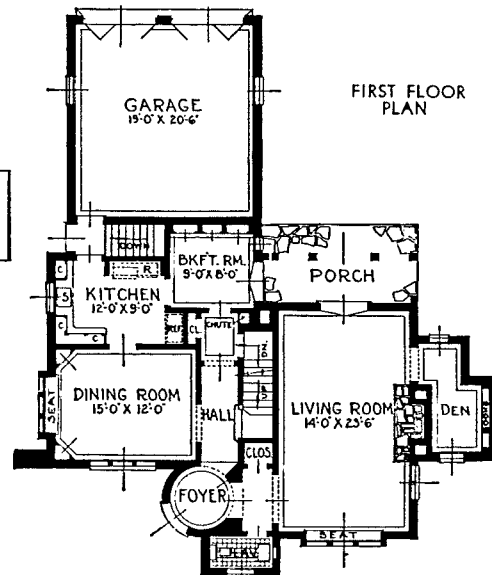
ATMOSPHERIC CHARM

THE home illustrated here is thoroughly practical and economical, while the architectural character of the exterior with its graceful sweep of the roof and window settings, marks the work as that of a master designer, and a conclusive test of one's ability to construct a workable and artistic composition. The mass is good and the spacing of the window openings has been well handled.



The living quarters are in keeping with the newer trend which faces garden vistas.

PLANS \$35.00

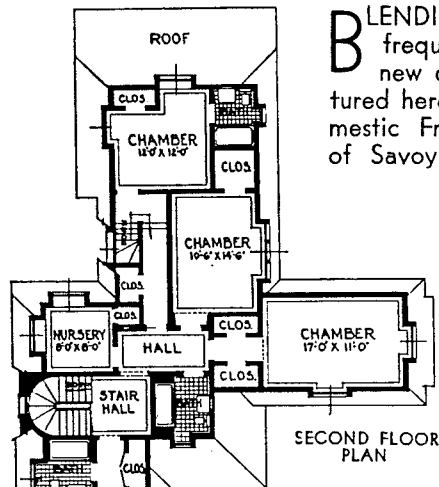




PLAN No. 64

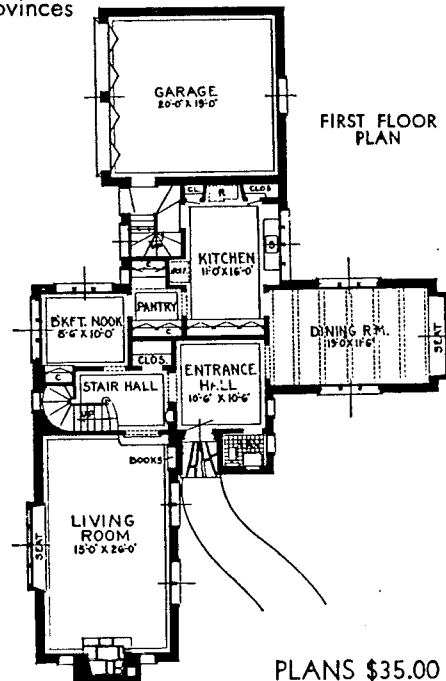
AUTHENTIC AND SUPERB

BLENDING architectural styles results in effects that frequently favor the quaint and unusual, lending a new charm to an old familiar idea. The home pictured here with the farmhouse type, is found in the domestic French provinces of Savoy.

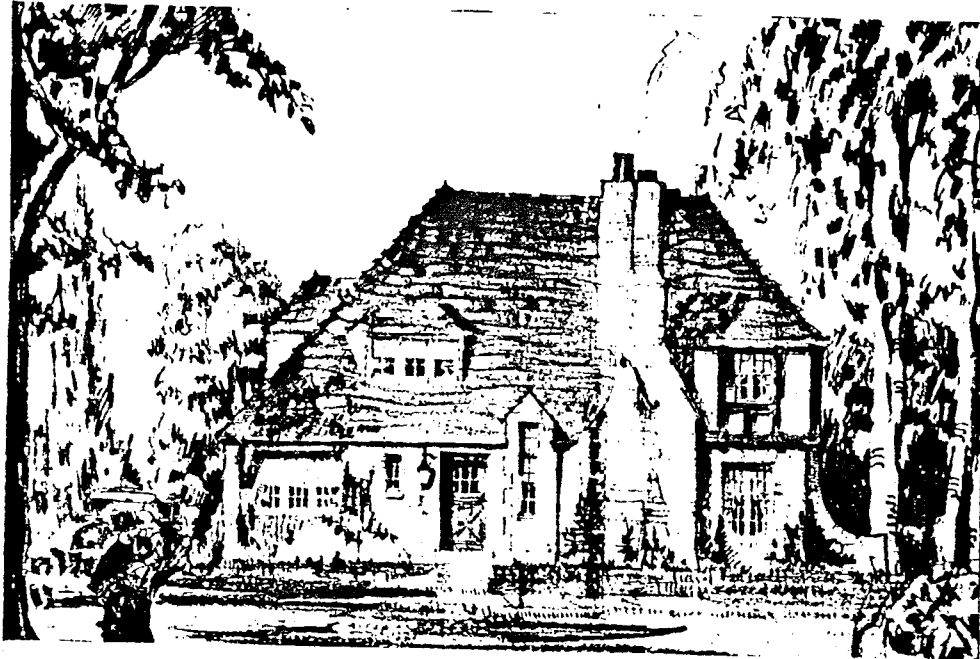


The chimney provides a satisfactory element of ornamentation, aided of course, by the varied textures of stone.

There are five chambers with roomy closets, including maid's quarters and three baths on the second floor, with service stairs.



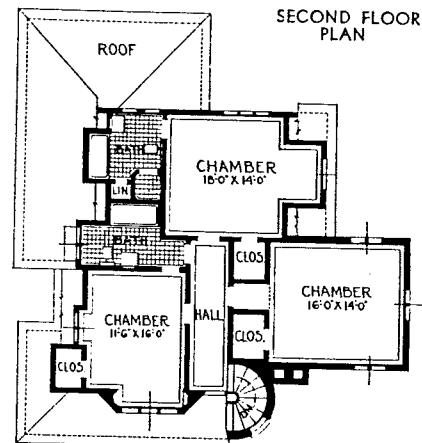
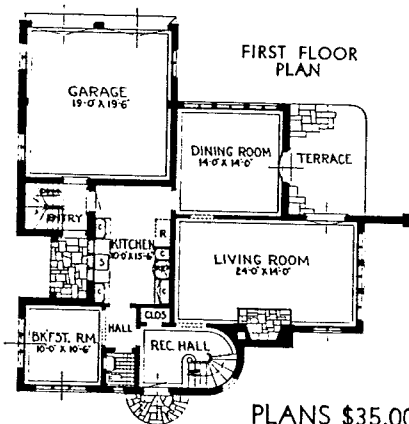
PLANS \$35.00



PLAN No. 62

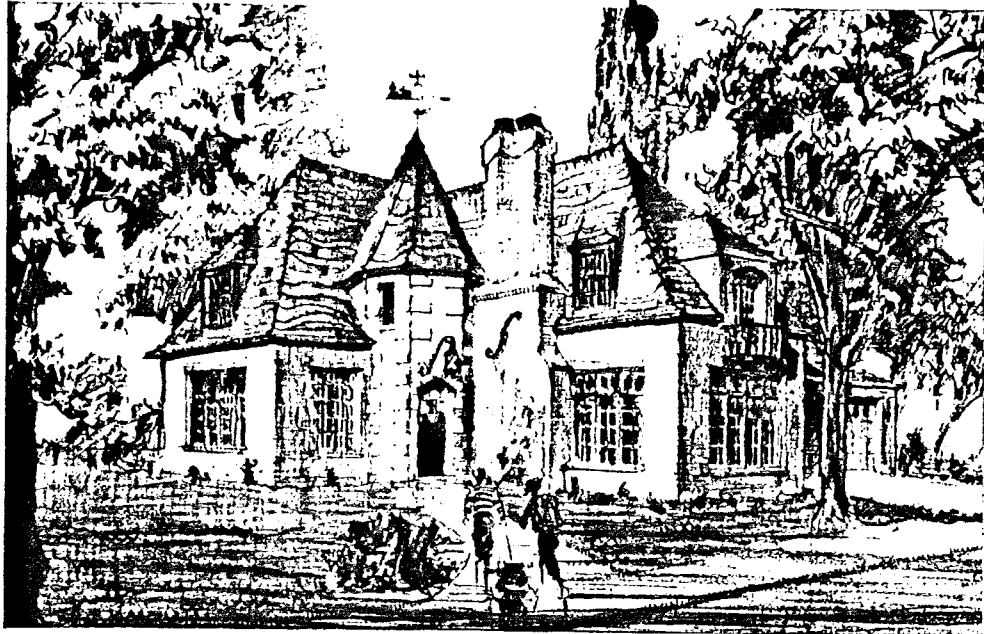
AN IDEAL REALIZED

NOT in extreme of design does the home builder find the true road to the satisfaction he seeks, but in the utilization of a tried and true style that universally pleases discriminate beholders. Such design is pictured here. The English style dominates it, yet adaptations to modern American tastes are so made which enchant rather than detract from its appeal. The complete effect is picturesque.



At the same time the plan is both practical and economical and the materials used are simple.

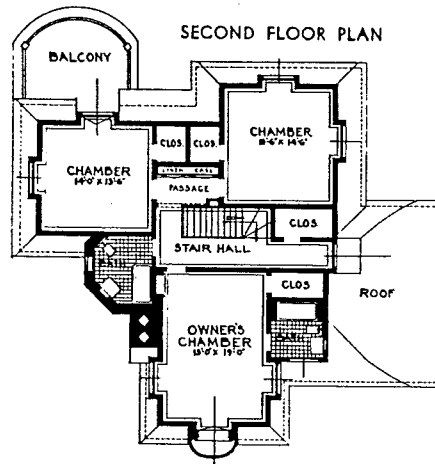
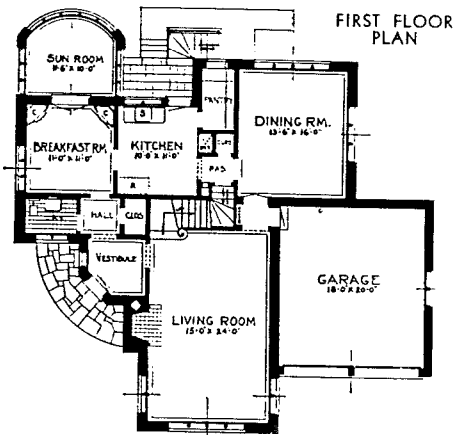
Interior spaciousness is assured as may be judged from the floor plan. The rooms may be treated in a simple English manner with plain rough textured plaster walls, stained woodwork and either natural or dark wood floors.



PLAN No. 65

FRENCH PROVINCIAL

THIS home has derived its design from the French provincial type. The careful detail of the construction and the homelike quality makes this home a favorite. Compact in outline, it is economical to build and yet the good proportion of various parts combine to produce a very pleasing design. Considerable thought has been given to this plan, and the many conveniences that are so necessary in making a home comfortable have been very well thought out.



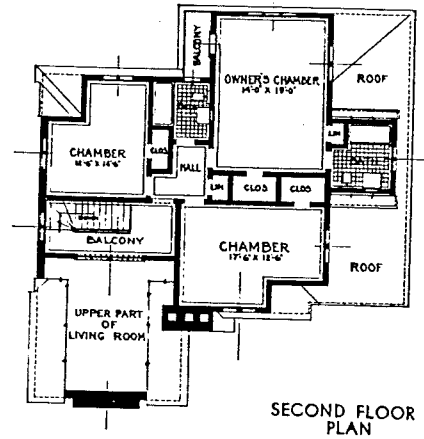
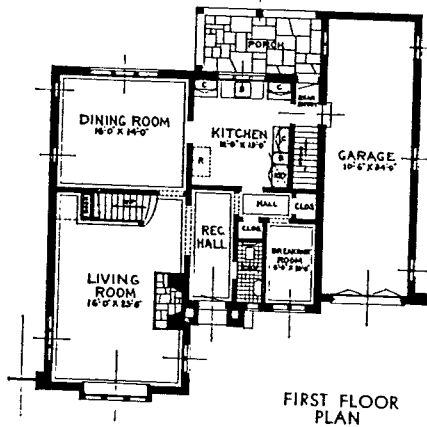
A very interesting feature is the sun-room just off the breakfast nook and a nicely arranged balcony directly above. While the function of this part of the house is quite apparent, the style and composition is so beautifully handled that utility does not displace art.

PLANS \$35.00



PLAN No. 32

A CHARMING ENGLISH NORMAN TYPE

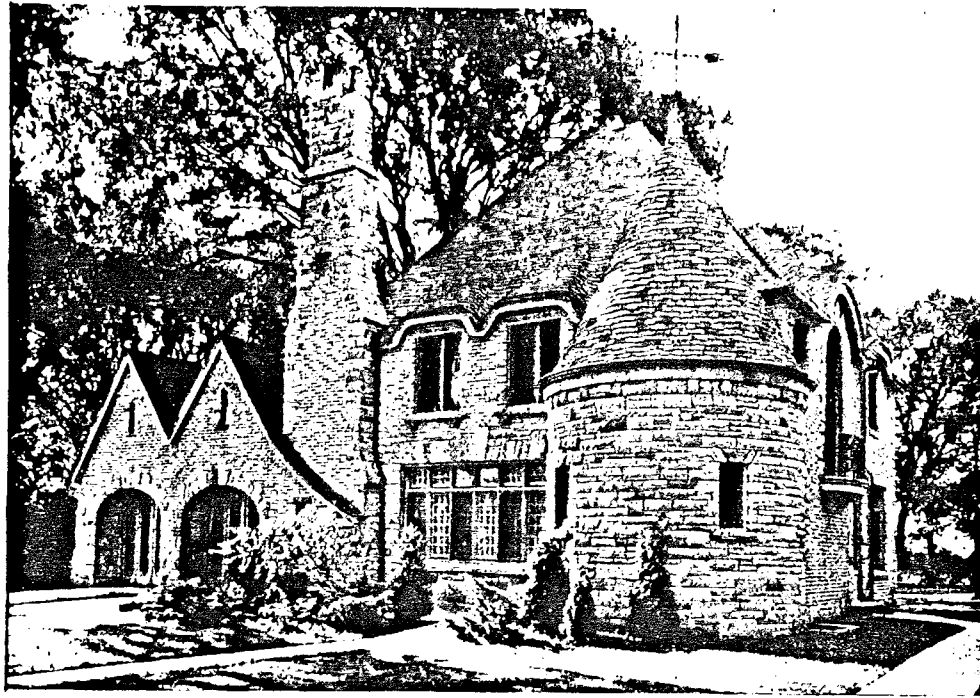


THE first quality which makes a home beautiful is, curiously enough, its practicability. Beauty and architecture must go hand in hand with conveniences. This charming Normandy home certainly embodies every feature to make it desirable. The gables have a wide clapboard effect which ties roof and walls together in a very effective manner.

PLANS \$35.00

An interesting feature is the studio living room with stairs beautified by an antique wrought iron rail, ascending to the second floor balcony. The kitchen is generous in size, splendidly lighted and equipped with several built-in cabinets and electric refrigeration. It connects with a small passage to a very large timbered porch giving full view of the garden.

on Garfield Court, Elmhurst



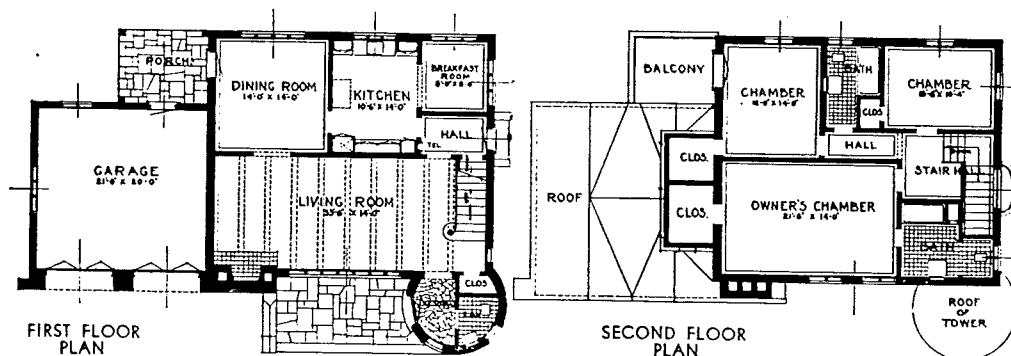
PLAN No. 29

HOME OF J. E. BRYAN

186 Olive Ave., Elmhurst, Ill.

THE beauty and substantial character of perfect construction is exemplified in this magnificent home. It has all the fine qualities of French residence architecture. The shingles are carried out in a perfect color harmony of dark blue and tan. The eaves have a blue trimming. Note the squatty, round tower with its weathervane and the arched en-

trance showing the thick stone walls that give strength, durability, individuality. The rooms are spacious and make very homelike quarters. The master chamber is large with dressing room and private bath. A natural fireplace in the living room lends enchantment and gives a feeling of contentment and pleasure.

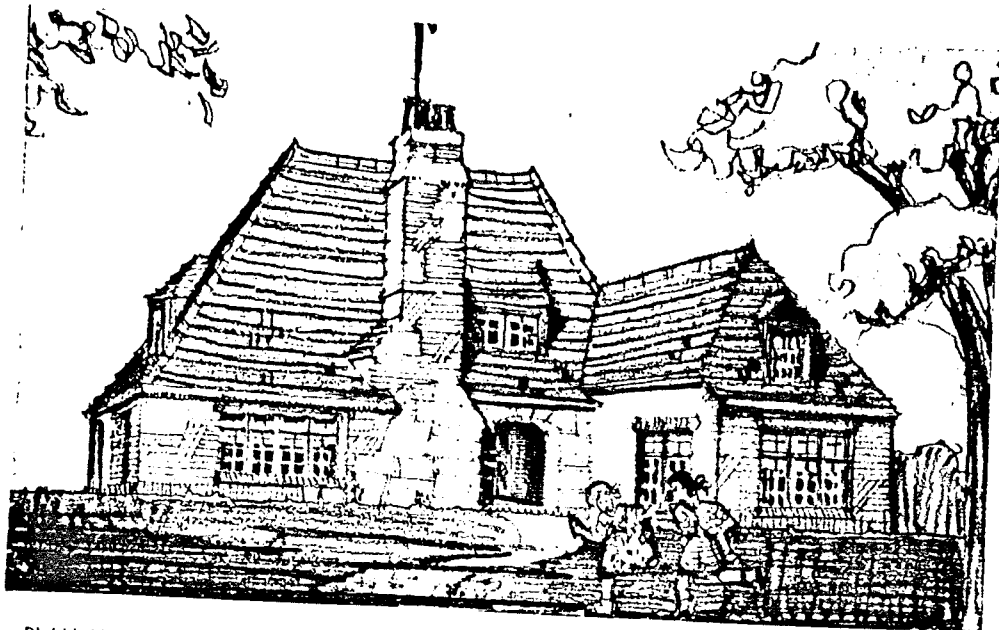


PLANS \$35.00

PAGE ELEVEN

ca. 1935

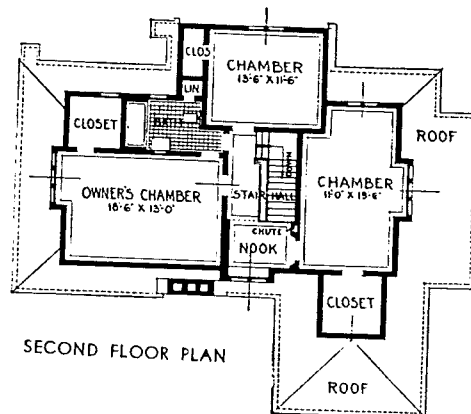
Home of the Joseph O'Reillys
 176 Olive Ave. (Court?)
 Elmhurst, Ill.



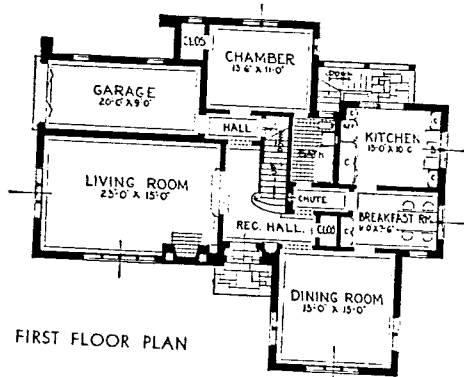
PLAN No. 71

THE ENGLISH TRADITION

A DELIGHTFUL adaption of English architecture has been effected in this rather unpretentious but wholly pleasing home. The feeling of the Tudor style has been expressed in the rugged stone chimney and entrance. The brick walls with the stone trim and the irregular shingles of variegated colors exemplify true character of the style.



SECOND FLOOR PLAN



FIRST FLOOR PLAN

PLANS \$35.00

The floor plan shows excellent consideration of living needs, and permits a period treatment in harmony with the exterior. The large living room is effectively secluded from the dining room and kitchen. The medieval and modern idea are here artistically combined to produce a comfortable American home in the spirit of Tudor.

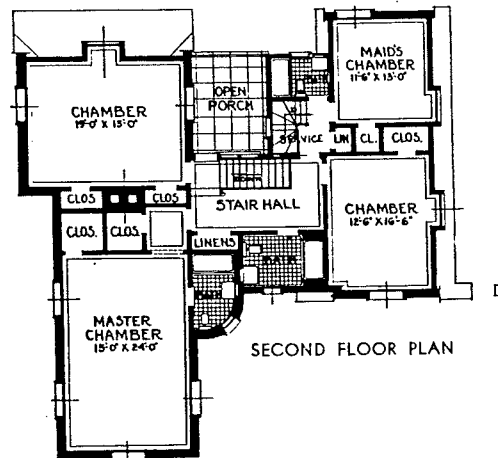
A carefully studied plan gives direct communication between the different parts of the household and all the principal rooms have exposures on two or three sides.



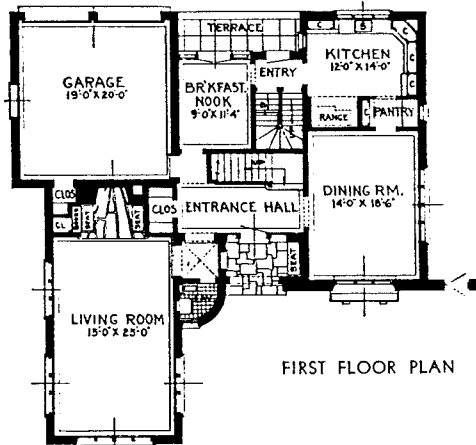
PLAN No. 66

A FRENCH MANOR

THERE are many features about this genial looking design which grow upon you after one studies their advantages. For example the tower dominates the design as the outstanding feature of its detail and serves a very practical purpose on both the first and second floor. The casement windows are arranged in pleasing groups and hued half-timber work, gives an interesting antiqued touch.



SECOND FLOOR PLAN

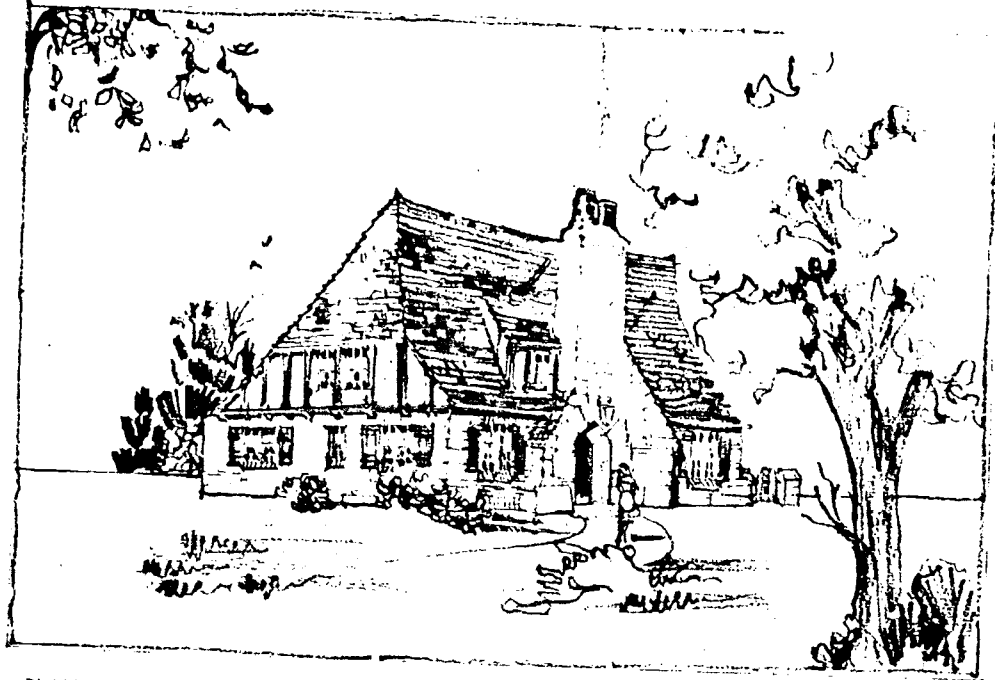


FIRST FLOOR PLAN

This type always has a "homey," comfortable air that suggests the mellowness of rare old traditions, always shared with the ever welcome guest.

The owner's large chamber with its private bath and roomy closet meets every personal need while cozy rooms for son, daughter and your occasional guests, complete the setting for your happy household.

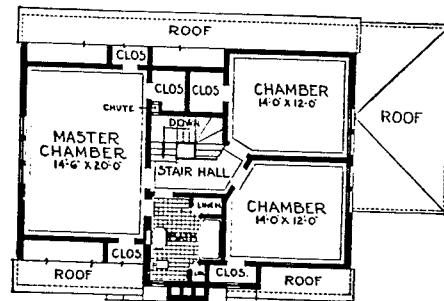
PLANS \$35.00



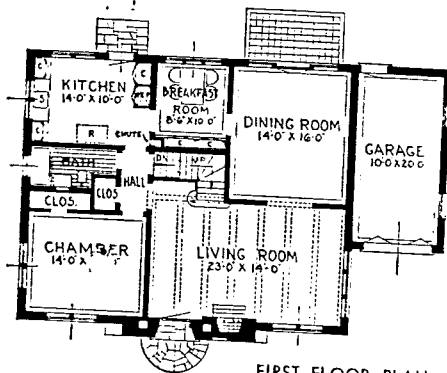
PLAN No. 73

ENGLISH COTTAGE

THE long lines of the roof, sweeping down, recalls to mind the cottages of rural England, which gave to that country a certain picturesqueness and feeling of "hominess." In a level or hilly country its lines will equally fit the landscape. The ornamental projecting chimney, capped with decorative chimney pots, forms a basic feature, at the same time providing a deep-recessed, stone-arched, entrance.



SECOND FLOOR PLAN

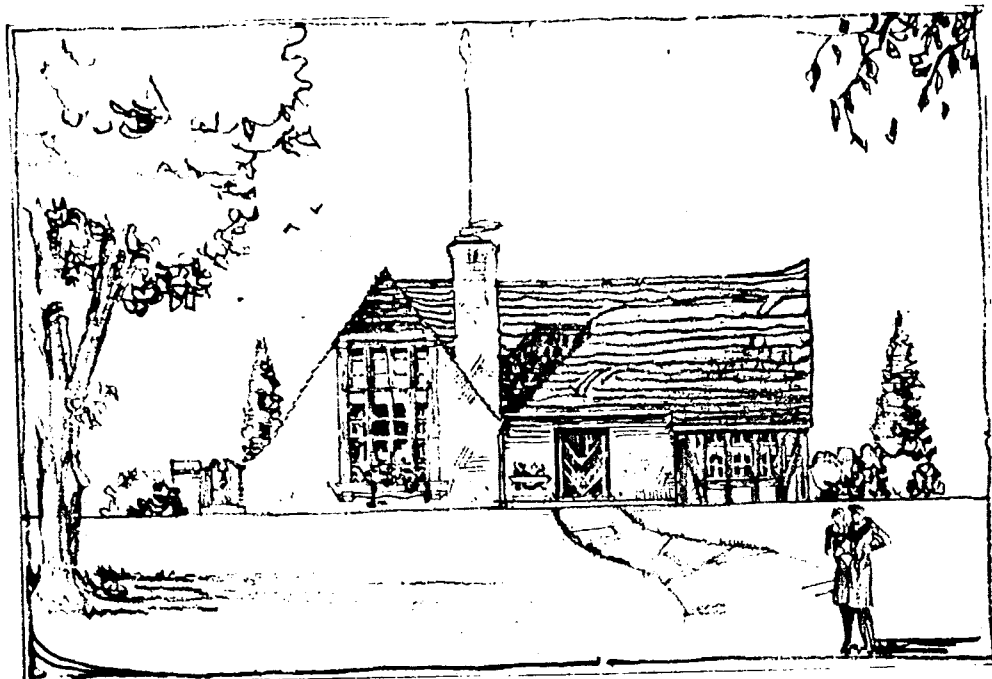


FIRST FLOOR PLAN

PLANS \$35.00

Although the roof has a low effect, it attains sufficient height for three fine chambers on the second floor. This house should be built close to the ground.

There is a chamber and bath on the first floor. If one so wishes, only the first floor need be finished at first, leaving the second floor for future planning when the need becomes urgent.

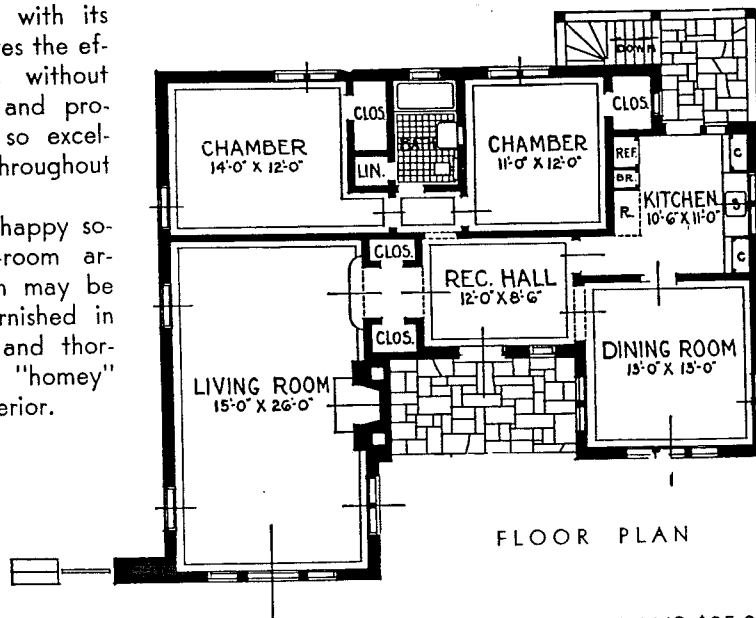


PLAN No. 95

INGRATIATINGLY LOVELY

AN English type of rare charm and undeniable artistic merit. The projecting gable with its large window relieves the effect of plainness without marring the unity and proportion which are so excellently maintained throughout the design.

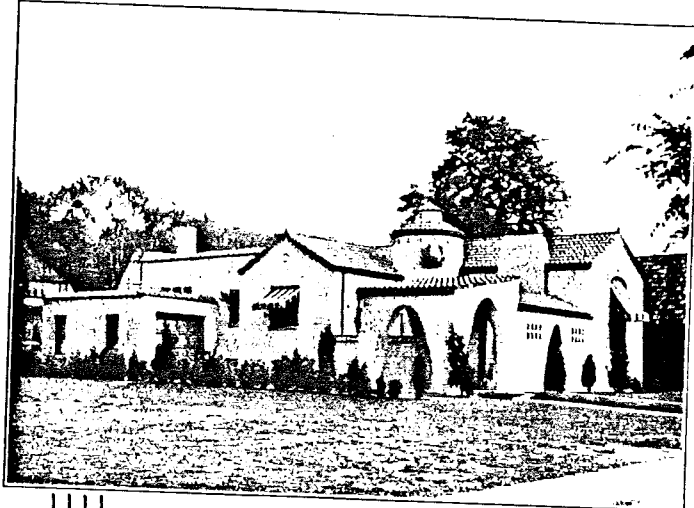
The plan shows a happy solution of a five-room arrangement which may be decorated and furnished in the same frank and thoroughly charming, "homey" manner as the exterior.



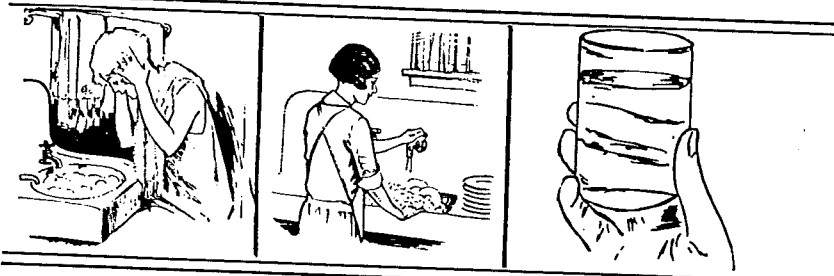
PLANS \$25.00

YOU WILL ENJOY T

SOFT I IN YOU



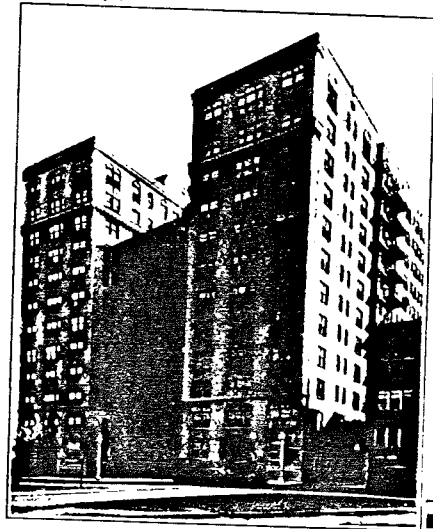
The Universal Water Softener will occupy a small out-of-the-way place in your basement and for a few cents a month, give you an unlimited supply of sparkling, clear, soft, chemically free drinking water at every faucet in the house. You no longer have any use whatever for the cistern with its



YOU WILL ENJOY this fine quality of soft water for drinking, shampoo and in your kitchen.

This fine quality of softened water will help you maintain the lustre and glaze that covers the enamel of the plumbing fixtures.

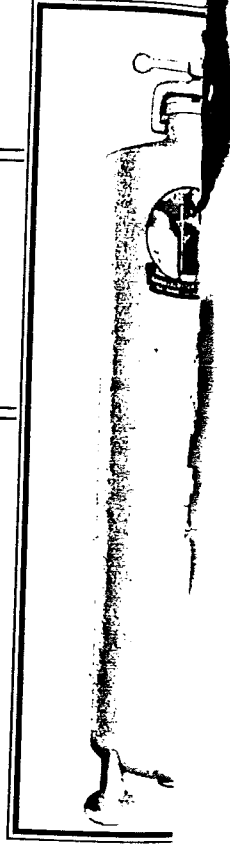
The Universal Water Softener will soon pay for itself in your home as it prevents scale and encrustations in the hot water coils, gas heaters, heating plants and helps you preserve the entire plumbing.



UNIVERSAL WATI

112 South Fifth Avenue

MAYWOOD
(SUBURB)



THIS FINE QUALITY WATER

R HOME

foul accumulation of stagnant water.

Universalized Softened Water is superior water for drinking, bathing, shaving, shampoo, baking and cooking, and in the laundry you can accomplish as much with one bar of soap as you now can accomplish with ten bars of soap with the average hard water.



YOU WILL ENJOY this fine quality of soft water for bathing, shaving and in the laundry.

YOU WILL ENJOY your bath with this fine quality softened water. Best of all, no stains or rings on the bathroom fixtures.

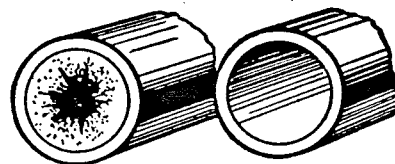
In the laundry your linens and woollens will be whiter, sweet and clean, free from soap curds. Work is done in less time with an extreme saving of soap. No chemicals to rot or ruin your clothes.

ENJOY this fine quality soft water in your present home. Write us now, stating the number of persons in your house so that we can suggest the proper size for your home.

ER SOFTENER CO.

), ILLINOIS
(OF CHICAGO)

Phone: Maywood 134



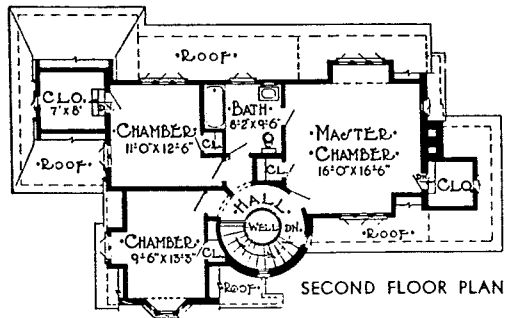
Hard Water

Soft Water



PLAN No. 26

A FRIENDLY ATMOSPHERE

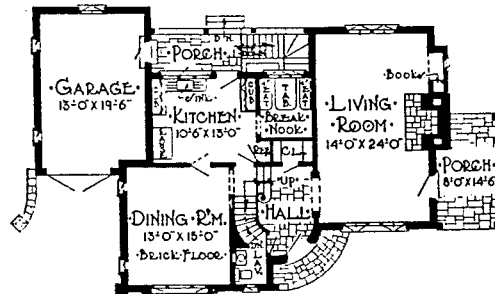


THIS design was taken from the picturesque cottages of Normandy, a style which is steadily gaining favor among those who appreciate true excellence of architecture. The Normandy cottage type has, of course, been skillfully adapted to more modern requirements and equipped to meet the most exacting demands of the American point of

view, schooled in highly perfected labor saving equipment and conveniences.

The floor plans of the house reproduce, far better than can be done in words, the success with which the interior has been arranged. Every point is harmonized, even to the incorporation of an integral garage without violating the style which is essentially medieval.

FIRST FLOOR PLAN



PLANS \$35.00

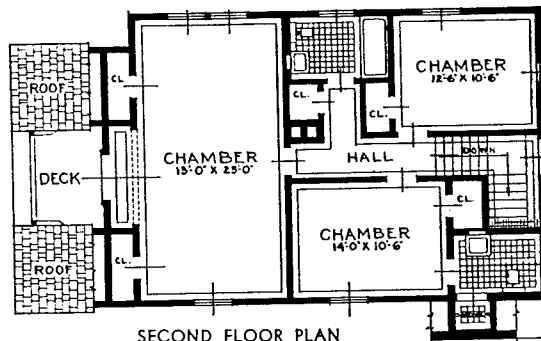
1985 Home of the Thomas O. Maruccis
204 W. St. Charles Rd., Elmhurst



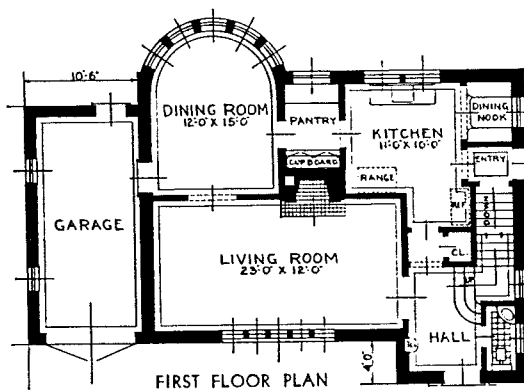
PLAN No. 24

PLEASING - PERMANENT - PRACTICAL

HERE is solidity and an expression of good breeding about this house that makes it most charming and delightful in its design — it is a good solution to the problem of getting beauty into the small house. The interior is just as distinctive as the exterior; the living room is nicely



SECOND FLOOR PLAN

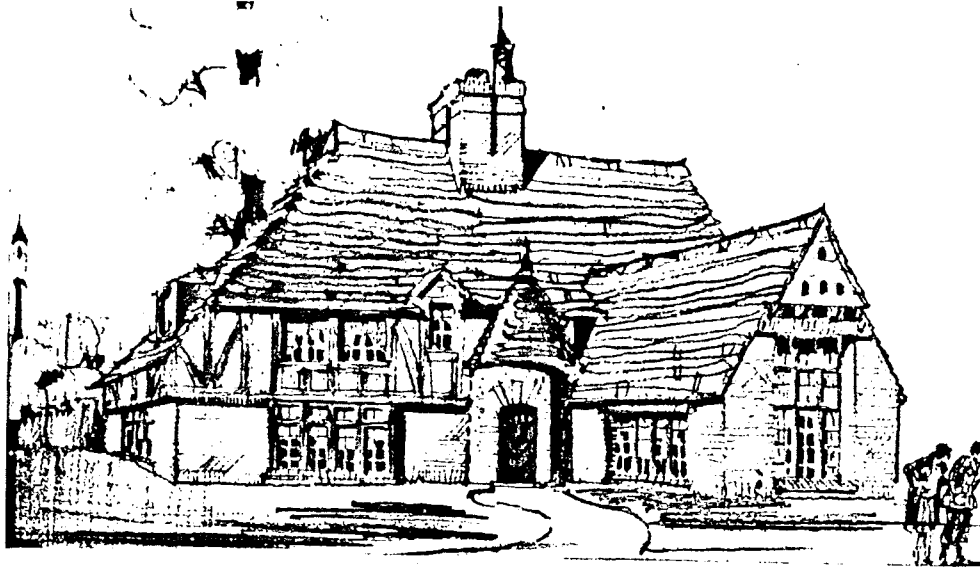


FIRST FLOOR PLAN

proportioned and is very well lighted with attractive groups of windows. A circular dining room is a novel idea proving very popular. There are three chambers and two baths on the second floor. The master chamber has extra large room with two closets and french doors leading out to an open porch.

PLANS \$35.00

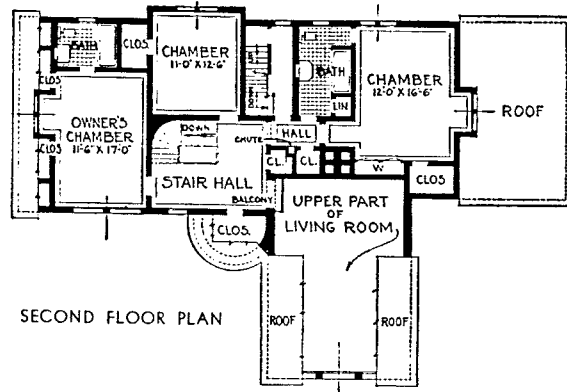
ca. 1935
 Home of the Thomas G. Shonts
 208 W. St. Charles Rd., Elmhurst



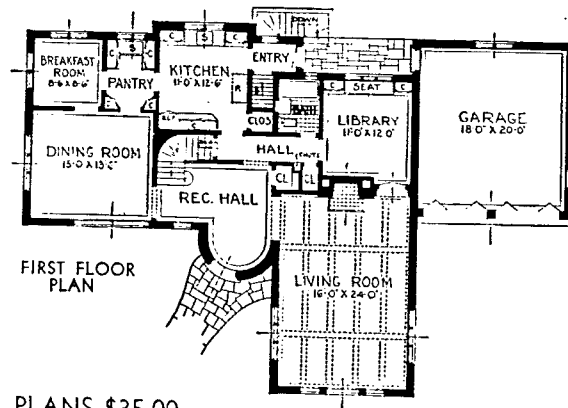
PLAN No. 72

RUSTIC AND PRETENTIOUS

DESERVEDLY popular, the "L" shaped home plan is accomplished in this instance with numerous good features. The designer obviously has admitted the demise of the erstwhile porch in favor of the family car, yet he provided for a delightful retreat by placing the library at the rear of the living room, with a terrace which can be used to very good advantage.



SECOND FLOOR PLAN



FIRST FLOOR PLAN

PLANS \$35.00

A beautifully designed front entrance is placed so that it is approached from the street by a curved walk of flagstone.

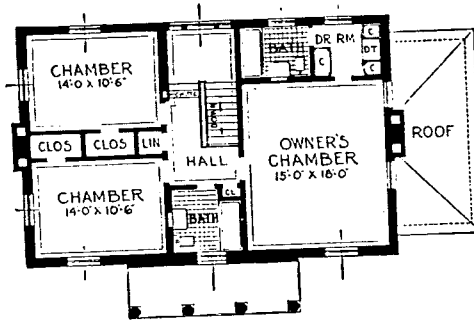
An interesting beamed studio living room is real atmosphere for those who desire a plan of some temperament, replete with good points. Here is your answer — modern, well-done and authentically correct.



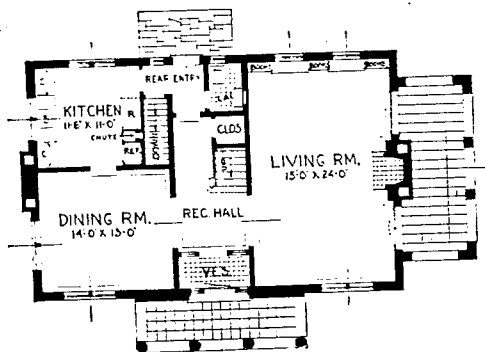
PLAN No. 88

GEORGIAN COLONIAL

A HOME that breathes refinement and unusual distinction. Dignified in every line and proportion, this aristocratic member of the Colonial period has many prototypes in all parts of the country. That this home should be copied widely in the present times of swift progress, merely emphasizes a parallel permanence in the qualities of the



SECOND FLOOR PLAN

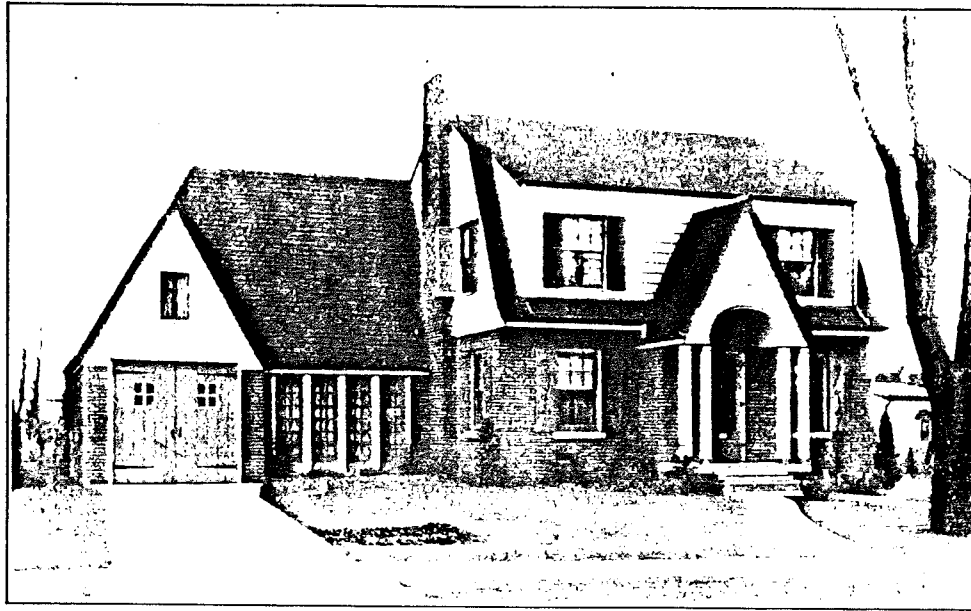


FIRST FLOOR PLAN

design itself. For it is one which you and your family would regard with ever increasing esteem.

Especially impressive is the pillar entrance. The porch on the side does not detract from the Colonial lines and adds to the hospitality of the design. This is a home that will grow even more beautiful as it ages.

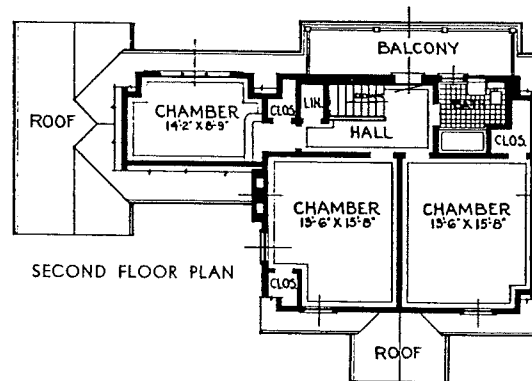
PLANS \$35.00



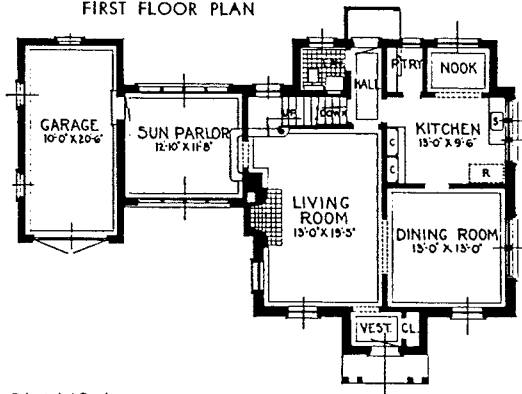
PLAN No. 115

ENGLISH COLONIAL

IF YOU have pictured mentally a home of true Colonial pattern which avoids severe lines here is your day dream come true. There is real individuality in connecting the main part of the house to the garage by means of a very well lighted sun room, which also provides for a variation in the exterior, and gives a feeling of spaciousness and breadth to the group.



FIRST FLOOR PLAN



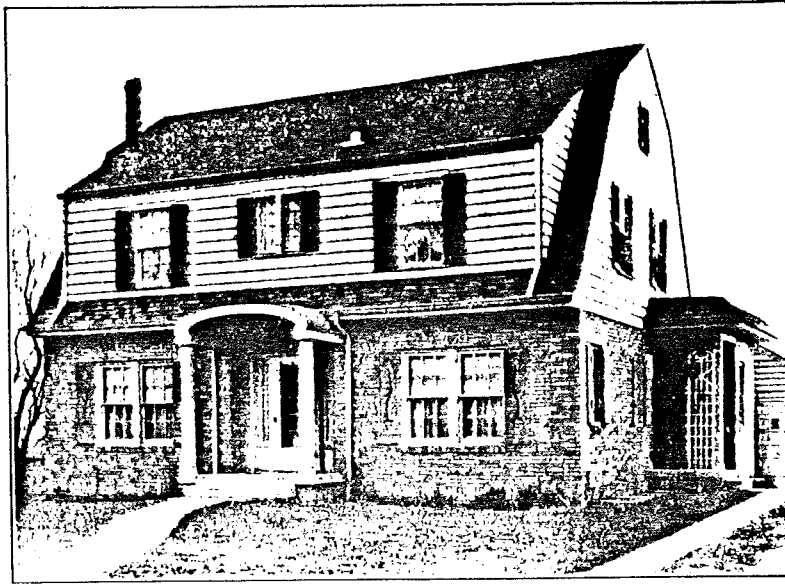
The bricking up of the lower story contrasts pleasingly with the siding above, while the entry strikes a hospitable note. The plans are ingenious and worthy of thoughtful consideration.

It is simple construction, yet its distinctive and rich detail, blends admirably into this Colonial structure.

ca. 1935

PLANS \$30.00

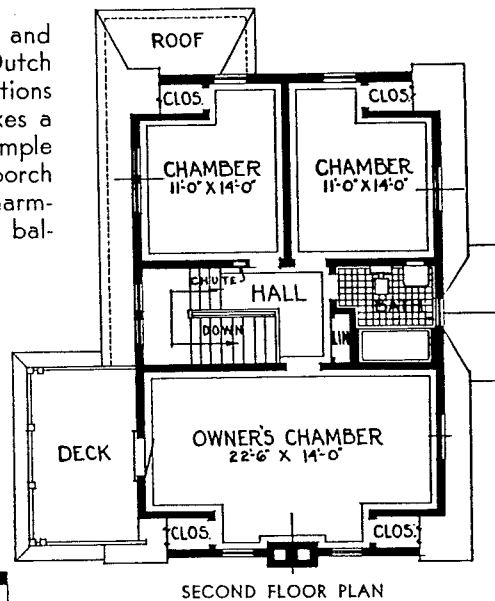
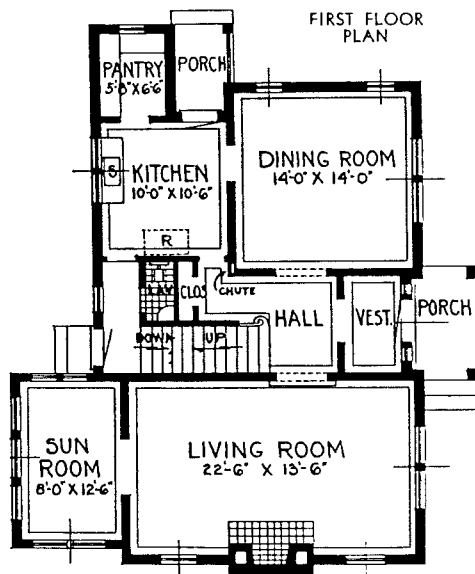
*Home of the Chris Sullivans
212 W. St. Charles Rd.
Elmhurst*



PLAN No. 31

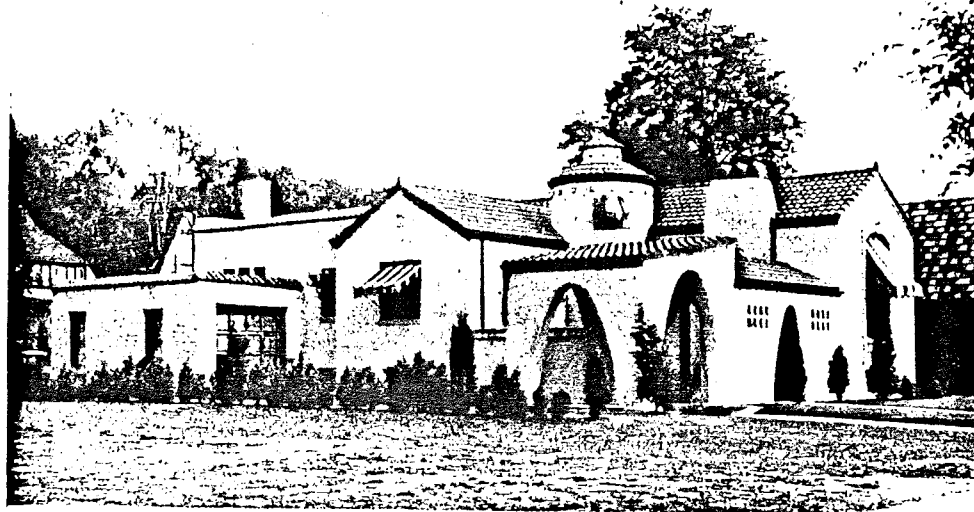
DUTCH COLONIAL

ONE always feels some spirit, quaint and homely hovering about these Dutch Colonials. Possibly it is the associations and ties to former generations that strikes a chord of charm for us. The exterior is simple with delicate detail and the entrance porch with its segmental deck is unusual and charming. The designer has achieved a well balanced plan in both stories.



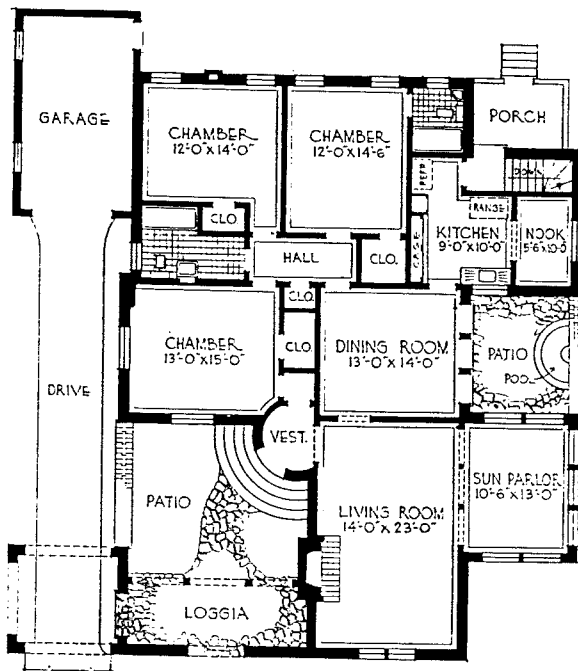
The living room and sun-room are the dominant points of interest of the first floor. The blinds lend just the right touch at the most apt spot and the sweep of the roof where it overhangs the first floor, gives character.

PLANS \$25.00



PLAN No. 108

FASCINATING SPANISH AIR



FLOOR PLAN

TRULY this is a dwelling of romance — a home of unique fascination, yet alive with a homelike atmosphere. The detail of design is characteristic Spanish. The texture and color of walls, roof, arches, etc., and the brightly colored awnings of reds and tans are truly to be admired. An unusual entrance of arched openings acts as a loggia, with timbered porch effect leading into an open patio. In the plan every foot of space is used to good advantage and all rooms are well lighted and well proportioned. The vestibule has the arched effect walls and ceiling of rough texture, opening into a large living room of a barrel ceiling effect. Two arches with ornamental posts lead into a very airy sun parlor, which you will note have french doors.

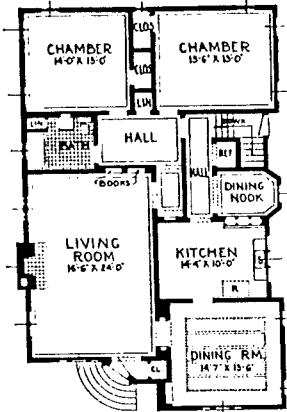
PLANS \$25.00

PAGE TWENTY-FOUR

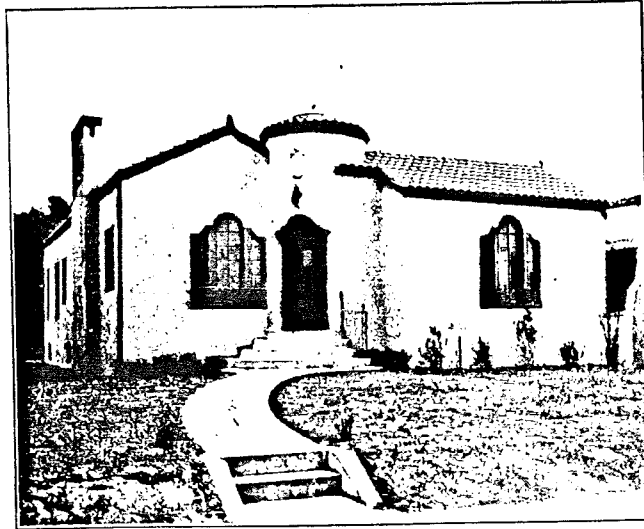
(CA 1965)

Home of the Dominick D. Matos
 S.E. cor. St. Charles Rd and Mitchell
 Elmhurst

PLAN No. 111



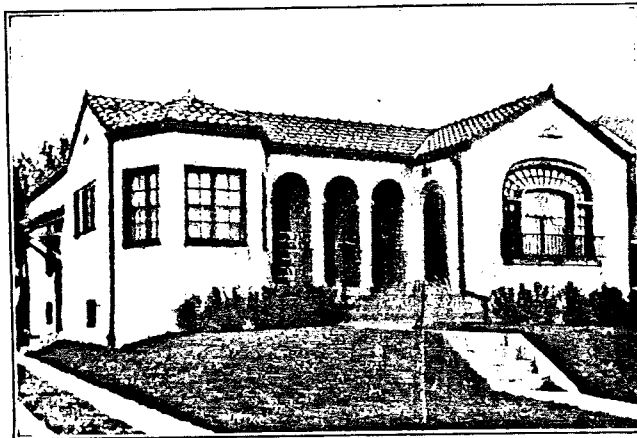
FLOOR PLAN



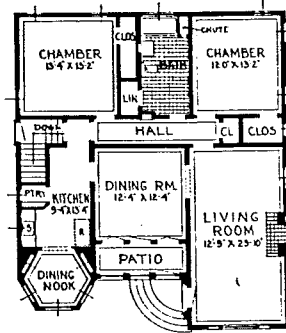
CALM AND CONTENT

SENSIBLE unpretentiousness makes this a "homey" place. One enters this delightful home through a tower entrance. The living room is certain to be bright and cheery the year 'round, while the dining room is placed to afford a glimpse of the open fire as you dine on wintry nights. This is one of the most successful homes planned by the designer.

PLANS \$15.00



PLAN No. 102



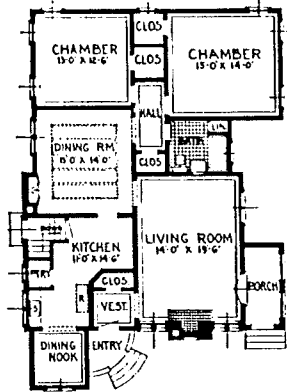
FLOOR PLAN

LOW AND SNUG

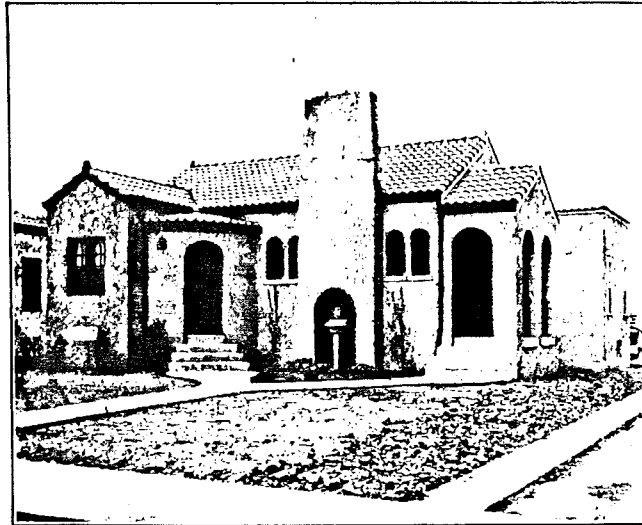
NOT SO MUCH from its proportions as from the exceptional beauty of its lines and its verdant setting is one instinctively impressed with the perfect charm of this home. Here is substantial beauty, lasting and strong, yet invested with a singular appeal. If homes have, as has been said, a mission of their own, this one's mission is to cheer and brighten not only the landscape but the spirit as well.

PLANS \$15.00

PLAN No. 113



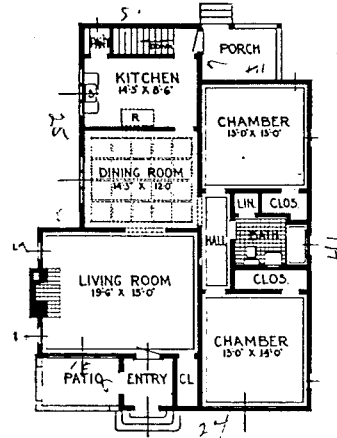
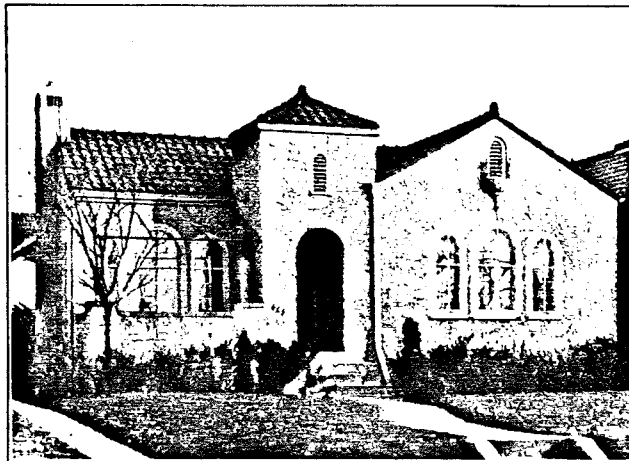
FLOOR PLAN



LEISURE AND COMFORT

COMFORT is the dominant note in this appealing bungalow. The exceptionally convenient arrangement of the interior alone would seem to be an appeal most difficult to resist. Kitchens are now often placed towards the front of the house. With such an outlook and with such fine facilities, the every day work is made as pleasant and agreeable as possible.

PLANS \$15.00



PLAN No. 103

QUIET AND PLEASING

SUPPLEMENTING a pleasant exterior, this home for a small family stresses compactness and convenience in its interior arrangement. Lacking extravagance in its lines it is of that desirable type which can be built with greatest economy while insuring the maximum of living comforts.

PLANS \$15.00

KNOWLTON WATERTOOB

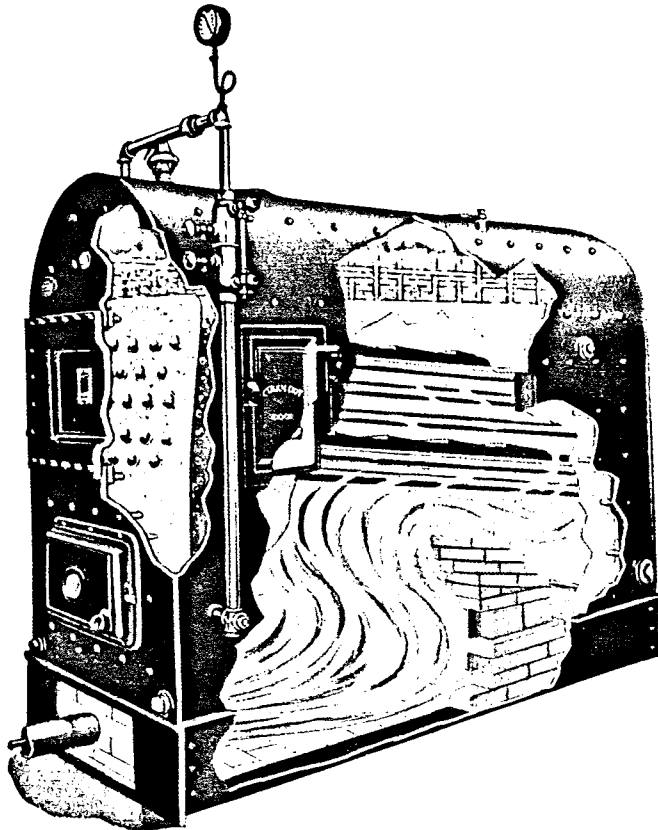
STEEL HEATING BOILER

Copper water tube construction produces the lowest operating cost and the quickest action.

▼
Copper bearing steel plate assures length of life.

▼
All these essentials are required for automatic heat.

▼
The Knowlton Watertoob is the only boiler that has met all of these requirements.



Manufactured by

ORR & SEMBOWER, INC.

READING, PA., U. S. A.

CHICAGO OFFICE AND WAREHOUSE, 208-12 NO. CLINTON ST.

STURDINESS AND BEAUTY

were the essentials in the construction of the Notre Dame stadium. That is why they specified—

High Test!

Look to Marquette Cement in homes of permanence and beauty.



MARQUETTE CEMENT MANUFACTURING COMPANY

CHICAGO

ST. LOUIS

COMPANY

CAPE GIRARDEAU

MEMPHIS

LA SALLE

STONE



STONE



ARTISTIC STONE

for

- | | |
|----------|--------------|
| Homes | Flag Walks |
| Churches | Weather Edge |
| Clubs | Rock Gardens |
| Terraces | Fire Places |

LANNON QUARRIES CORPORATION

Executive Office: BEAVER DAM, WISCONSIN

"Estimates Gladly Furnished from Blue Prints"

Avoid this Costly Mistake



It can happen—just as it has to thousands! The disappointment of finding the house you build or buy isn't everything a home should be.

Fuel bills are high, rooms are hard to heat—perhaps cold and drafty . . . doctors' bills mount up . . . bedrooms are hot and stuffy in summer.

Now—there is an easy, low cost way you can take to prevent this costly mistake—to assure yourself low fuel bills and a really year-around comfortable home.

Simply line the walls and attic of the home you build with full inch thick Balsam-Wool — *true insulation.*

Families all over the country have found that Balsam-Wool *insures* a warm and cozy home. Drafts are banished. Fuel bills are way down. And in summer, rooms are cool and restful.

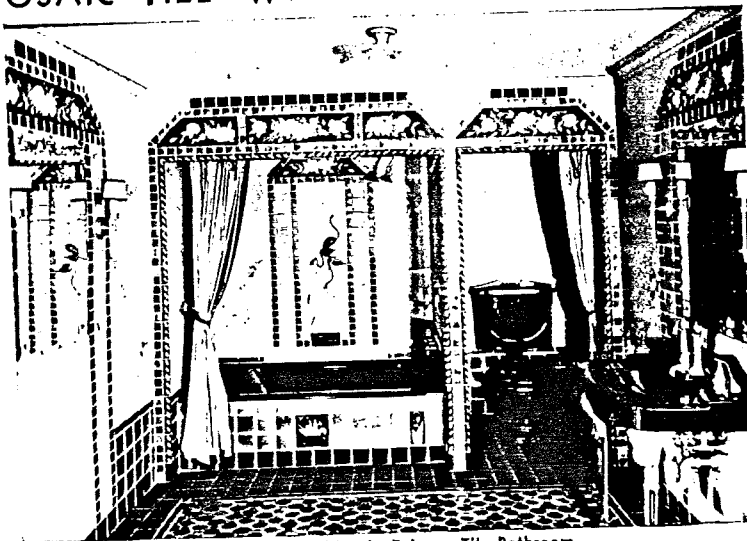
Balsam-Wool is applied thus between the studding and roof rafters of your house. It fits snug and tight between framing members, calks every crack and crevice. It TUCKS IN as only a flexible insulation can.

Wood Conversion Company
Cloquet, Minnesota

Balsam-Wool Blanket



MOSAIC TILE WILL INSURE SATISFACTION



An Attractive Mosaic Faience Tile Bathroom

THE MOSAIC TILE COMPANY

ZANESVILLE, OHIO

NEW YORK

CHICAGO

ST. LOUIS

SAN FRANCISCO

LOS ANGELES

QUALITY :- :- SERVICE

Exterior finish
is of the Utmost Im-
portance in Artistic
Homes

**CONCO
FACE BRICK**

... because of a wide variety
of beautiful textures and
colors have been specified
on many Homes by La Fave.

H. D. CONKEY & COMPANY
BUILDERS BUILDING * * CHICAGO

**CREO-DIPT
PRODUCTS**

THEY GIVE EVERLASTING BEAUTY

Creo-Dipt Stained Shingles
Stained under pressure — then
brushed — carton packed.

Creo-Dipt Mohawk Asbestos
Hand-Textured.

Creo-Dipt Fireproof Asbestos
Shingles
Wood-Textured—Natural Stone
Colors.

also

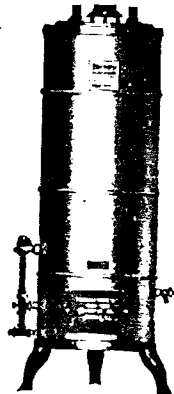
Creo-Dipt Weatherproof Paper

CREO-DIPT CO., INC.

NORTH TONAWANDA - - NEW YORK
Chicago Office - - - 122 South Michigan Avenue
Telephone - Harrison 5831

**KOIL-LES
TRIUMPH**

Insulated Automatic Storage
GAS WATER HEATERS



A Modern Necessity

This more modern silent household servant is SELF-ACTING in STARTING and STOPPING. Any time day or night it has a plentiful supply of PIPING HOT WATER ready on tap at the turn of any hot water faucet.

Hot water for Bathing, Shaving, Cleaning, Dish Washing, Laundry Work, Shampooing, Massaging, and a thousand and one other uses; it is not a luxury — it's a daily necessity — a service you absolutely need in your home.

Construction Features

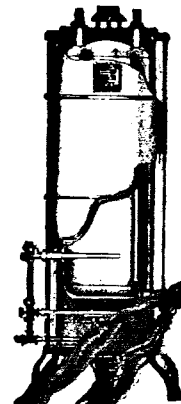
An appliance with greater heating area—each part heavily constructed—exposed surfaces two-coat baked enamel—beautifully finished—CONSTRUCTED with extra heavy galvanized copper-bearing steel boiler—a non-backfire screenless gas burner—a simplified fool-proof, easy adjustable thermostat—a safety control device at a slight extra cost which will shut off the gas supply to the heater in case the pilot light should become extinguished.

Operating Features

There are no copper coils, spreaders, tubes or restricted heating units of any kind to become coated or stopped up from lime and other foreign matter in the water. Therefore, the gas bills will not increase and there will be no interrupted service or expensive repair costs. Satisfactory service assured in every way at a cost of only a few cents per day for gas.

2-Year Guarantee

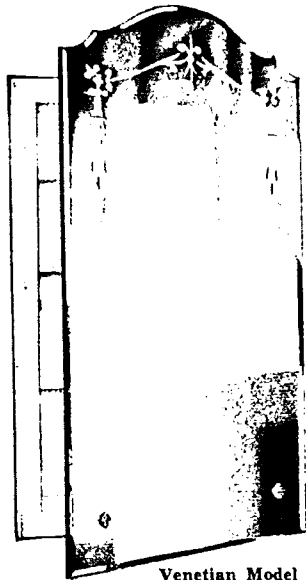
These heaters made in all sizes are approved—guaranteed for two years and retail at very moderate prices.



KOIL-LES HEATER Co.

GENEVA, ILL., U. S. A.

**MORTON
MEDICINE CABINETS**



Venetian Model F

MORTON MANUFACTURING COMPANY
5105-43 West Lake Street, Chicago, Illinois

Such Things

that make the home
complete » » » » »

- Rustic Surface Hardware
- Andirons
- Fireplace Fittings
- Mail Boxes
- Chimney Irons
- Doorknockers
- Bird Baths
- Sun Dials
- Gazing Globes

**CLARK & BARLOW
HARDWARE COMPANY**
123 W. LAKE STREET • CHICAGO

"JUST A SHADE BETTER"

AWNINGS

LATEST
DESIGNS
IN
FABRICS
AND
FRAME
CONSTRUCTION

**STANDARD
AWNING COMPANY**

3810 W. North Ave., Chicago
Phones: Albany 5830—5831

E S T A B L I S H E D 1 9 0 5

Quality Products at Reasonable Prices

**COAL
L U M B E R
BUILDING MATERIAL**



Elmhurst Lumber & Coal Co.
Yards and Office: 100 Prospect St., Elmhurst, Ill.
T e l e p h o n e s : 1 9 a n d 9 2

**STRUCTURAL STEEL
MISCELLANEOUS IRON WORK**

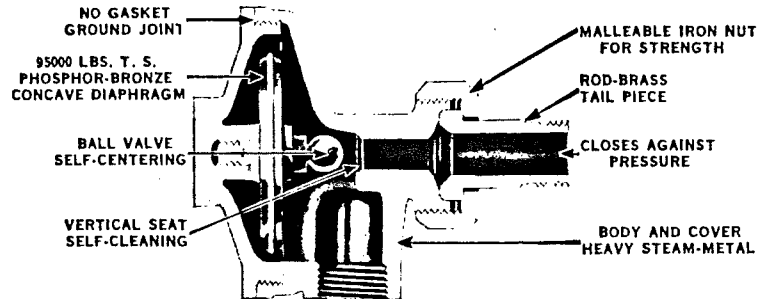
**ZIEBER STEEL
COMPANY**

4623 West Harrison Street
CHICAGO, ILLINOIS

Telephones
Austin 2386 Mans. 5475

ESTIMATES CHEERFULLY FURNISHED

ILLINOIS HEATING SYSTEMS



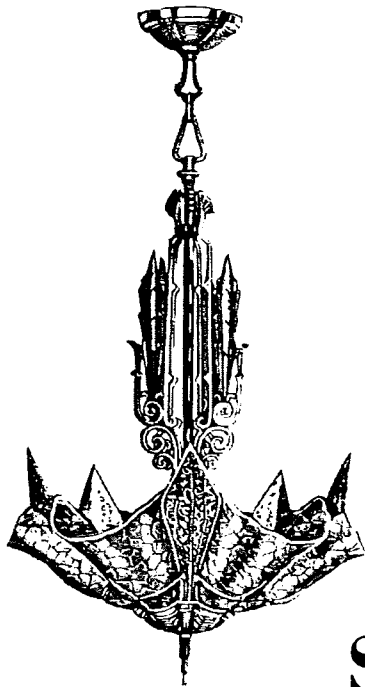
Sectional view of the ILLINOIS Thermo Radiator Trap

There is an ILLINOIS System suitable for any type of installation — Vacuum, Vapor, Modulating, Thermal-Zone Control. These systems are found in America's finest and foremost buildings from coast to coast. They have a remarkable record for flexibility, noiseless operation, fuel economy and durability of apparatus, that is beyond question.

Write for bulletin 22 today. It explains fully the outstanding merit of ILLINOIS VAPOR SYSTEMS

ILLINOIS ENGINEERING COMPANY

21st Street and Racine Avenue » » » » » CHICAGO



*THE
NEWEST
FINEST
SMARTEST*



in

LIGHTING FIXTURES

For Every Home, Office, or Church

Designed and Manufactured by

SOLAR ILLUMINATING Co.

718 W. Washington Blvd.

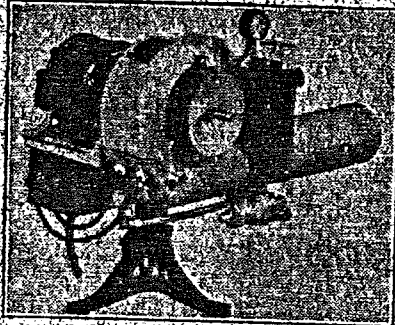
CHICAGO

Telephone Monroe 4010

Essential to the Comfort and Health
of your family and guests to

KEWANEE AUTOMATIC OIL HEAT

Highest grade modern equipment with electric ignition and fully automatic controls, burning the heavier, lower priced oils of highest heat content. Intelligent installations in accordance with best engineering practice, tempered by long practical experience, assure you



REAL HEATING SATISFACTION
CLEAN, ECONOMICAL, RELIABLE

KEWANEE ENGINEERING
CORPORATION
Forsyth Bldg., Oak Park, Ill.

TELEPHONE
VILLAGE 6787

HAVE BILLIARD AND PLAY ROOMS IN YOUR BASEMENT



Because It Gives Permanent Beauty

To the exterior as well as the interior

Exterior California Stucco, is a true Portland cement stucco with all the properties of a superfine concrete — plus color and texture.

Interior California Stucco, is a plaster of the highest standard. It is furnished in practically all colors or can be made up in an infinite variety of color combinations and textures.

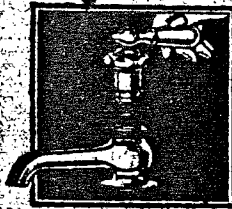
To specify California Stucco means far more than to specify a sack full of colored material; it means using an organization thoroughly experienced in what is needed to produce dependability — it means that you avail yourself of methods which produce the best stucco structure, most economically — and a service which fully cooperates with owners, architects, contractors and plasterers, to create color harmony, design texture and application.

The
CALIFORNIA STUCCO PRODUCTS CO.
OF CHICAGO

Display Rooms: W. 74th Place and Ashland Avenue • Phone Hemlock 2548

**DEPENDABLE
TROUBLE-FREE**

They Never Wear Out



**CHICAGO
FAUCETS**

THE CHICAGO FAUCET CO.
2700-22 N. Crawford Ave. - Chicago