

ADOBE PREMIERE ELEMENTS

Introduction

Adobe Premiere is a video editing software package suitable for both amateur enthusiasts and professionals. Like most editing software, Premiere works by importing video from a source such as your hard drive, then allows you to create new, edited versions which you can export back as a file, disc, or other medium.



Workspaces

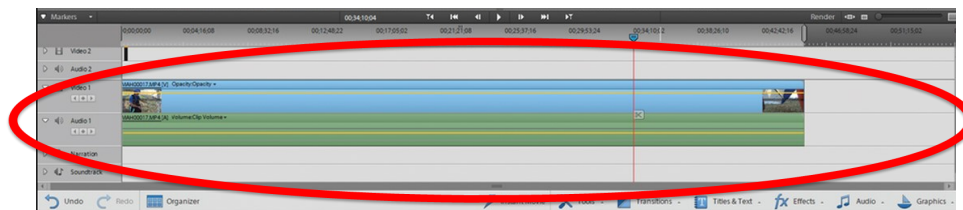


There are 2 different workspaces in Premiere Elements, Quick and Expert. Both function similarly, being different in two main ways. First is the *Project Assets* panel. In Expert workspace, when you import media, it goes to the Project Assets. From the Project Assets panel, you drag and drop media on to your timeline to assemble your video. In Quick workspace, there is no Project Assets panel. Instead, it goes directly on to your timeline.

Secondly, Expert workspace contains up to sixteen times more effects and transitions than the Quick workspace does.

Timeline

Your timeline is located at the bottom of the screen and is where your video will be assembled. By dragging media and placing them in the desired order, you create a sequence of clips which play in the timeline from left to right. To watch what's on your timeline, push the play arrow on the center of your screen. To pause, press that same button again. Pressing the spacebar will also play and pause your video.



ADOBE PREMIERE ELEMENTS

Adding Media

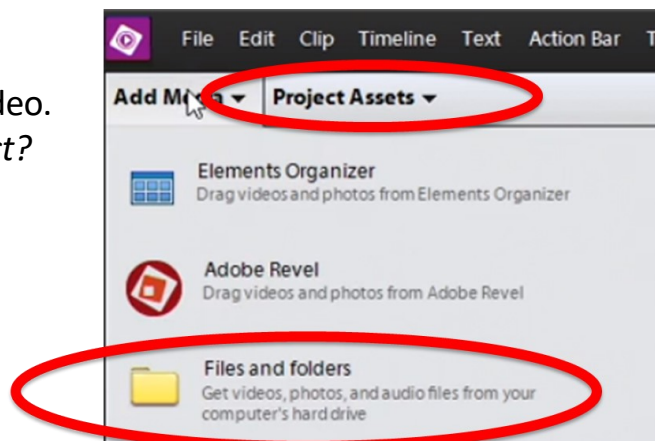
What is media? Media is what will make up your video.

What type of media can you import into your project?

Any kind of video, audio, or still image.

There are two ways to add media to your project.

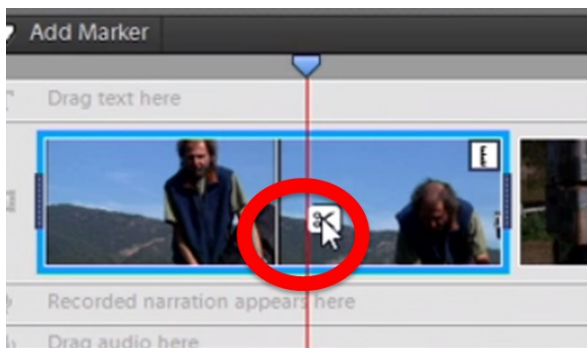
- Add Media > Files and Folders > Chose a file
- Double click in the Project Assets



To select multiple files at once, press and hold “Shift” to select a series of clips or press and hold “Ctrl” to select at random, several.

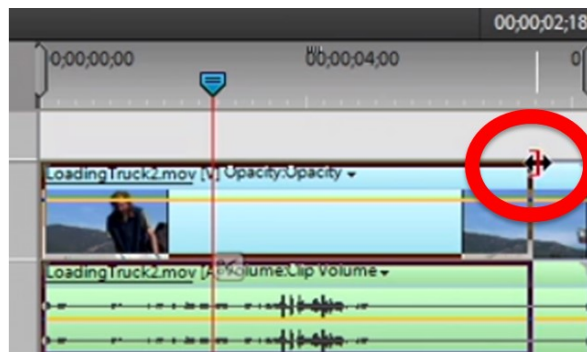
Cutting and Trimming

In Premiere Elements, there are two main ways to edit; Cutting and Trimming.



Cutting

Cutting is similar to the way film-strips were edited in the past. You take one clip and break it into two clips. (This only applies to footage within Premiere, it does not effect your source clip.)



Trimming

To trim a clip, drag the edge of a clip to where you would like it to end.

Ripple Editing: Anytime you remove a video, the other clips to the right of it will move left to fill in the gap. If you add a clip, any clips to the right will move down.

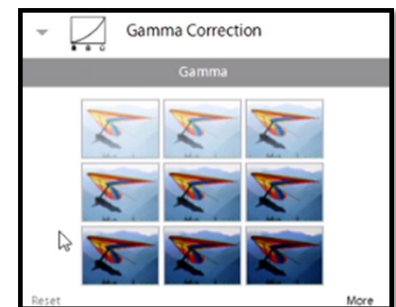
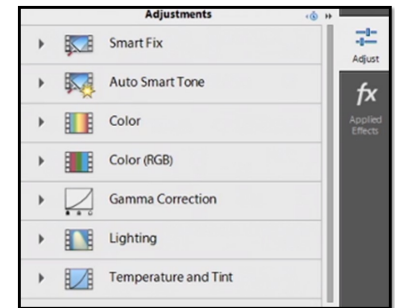
ADOBE PREMIERE ELEMENTS

Adjustments

The Adjustments panel includes a number of tools for correcting your movie's lighting and color, stabilizing your footage, and enhancing your audio.

First, select the clip you want the effect applied to. Along the right side of the screen is the adjustment panel. Press the down arrow next to the effect you want to apply. This will bring up different options for that effect. Select which version of the effect best fits your needs.

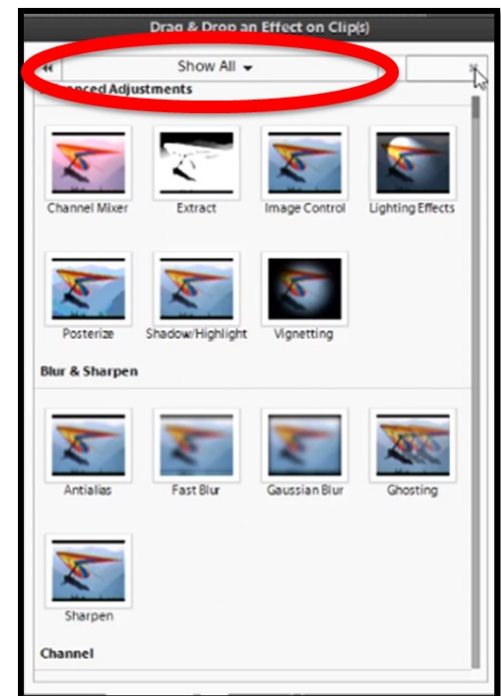
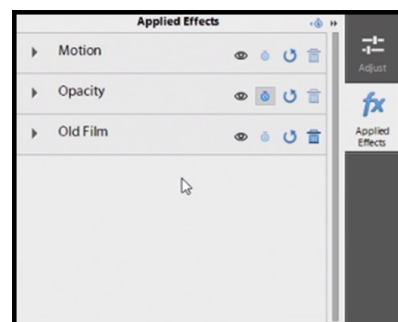
Not sure how to fix your clip? Try applying “Smart Fix” to have Premiere automatically fix your clip.



Effects

Open the Effect's panel by pressing “Effects” on the bottom of your screen. At the top of that panel, you can select the type of effect from the drop down menu. Simply choose an effect and click and drag it on to the clip(s).

Need to adjust or delete an effect after it's been applied? Use the “Applied Effects” panel, located next to adjustments

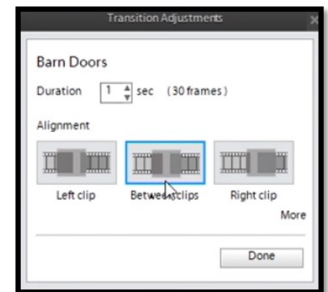


ADOBE PREMIERE ELEMENTS

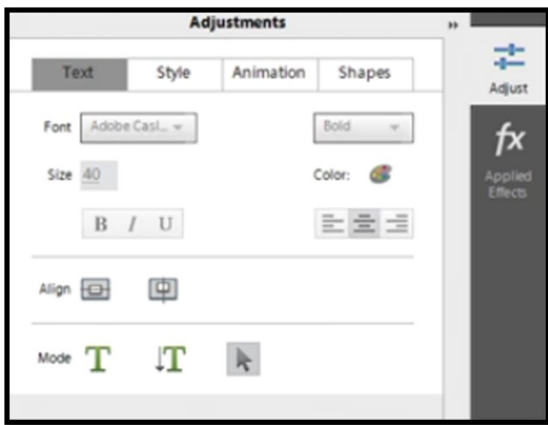
Transitions

Transitions are located next to “Effects” on the bottom of the screen. In expert view, there are 16 categories of transitions. Choose a transition and drag and drop it in between the two clips where you want to have the transition take place.

Once you’ve dropped your transition onto your clip, a menu will appear next to it where you can make adjustments, including the length of the transition.



Titles



Premiere has many professional looking title presets. To begin, click “Title & Text” and select a preset from the list. Click and drag that preset to where you would like it on the timeline. To make adjustments, including the font, color, size, and animation style, press “adjust.” To delete a whole section of text, click on it and a box will appear around it. Press delete on your keyboard. You can also delete the background by clicking on it and pressing delete.

Publish & Share

Your Premiere file isn't your video! To share your video, upload it to social media, or play it back on your computer or mobile device, you'll need to publish the file.

Premiere makes this simple. Click on “Publish+Share” and select the preset that best fits your needs.

For More Resources

Visit elmlib.org/lynda for additional tutorials and example files on Adobe Premiere Elements.



lynda.com