

DIRECTOR'S REPORT

- **Grants Committee**

I work with City of Elmhurst staff to review yearly Explore Elmhurst Grant submissions. The grants committee reviews submissions from local organizations and suggests grant awards to be presented to the City Council for approval. The committee met on February 12<sup>th</sup> and 13<sup>th</sup> and we heard from local organizations hoping to receive a grant. The goal of the grant is fund events and cultural activities that attract visitors and overnight guests to the City of Elmhurst.

- **Programming Strategic Planning Meeting**

Staff who plan and conduct programs assembled for a programming strategic planning meeting on Thursday, February 6. During the half-day meeting we talked about a variety of subjects that included creativity, using data to analyze program success, and patron satisfaction. We also reviewed the overall strategic plan to make sure we're on target to meet programming goals.

- **Snow**

We had our first significant snow fall of the season. We're always grateful for the Ventrac snow machine. Facilities staff are able to keep up with the snow fall while protected from the elements. The City plows our parking lots but we are responsible for all the walkways.



### Artificial Intelligence

Twenty patrons stopped by to interact with Christina Racibozynski, Alyssa Murphy and Angie McCarver during the lobby table about AI in January. One patron followed up with the comment, “Please thank the ladies in the lobby doing the AI demonstration. I came home and installed Microsoft Designer on my phone and already I’m having so

much fun with it. Actually, I laughed so hard I couldn’t see. Also installed ChatGPT and planned a trip to Hawaii.”



### Death Café

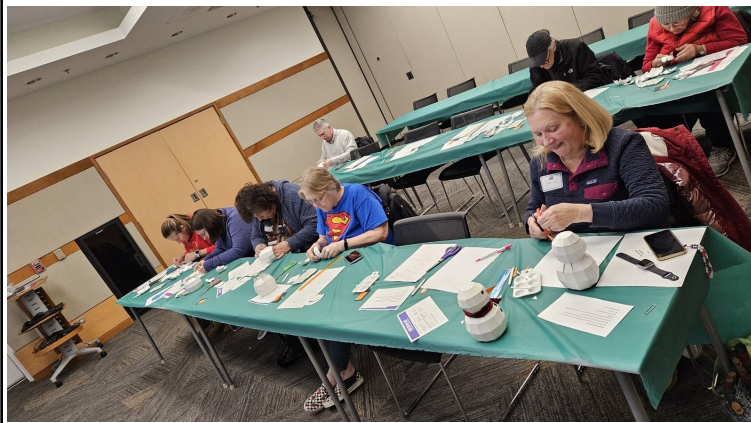
Hayley Rightnowar planned EPL’s very successful Death Cafe. Nancy Betker and Michelle Fleury, volunteers with Compassion & Choices, led an almost full room of eager attendees. Topics discussed included ways to express sympathy, end-of-life preparations, writing an obituary, NOK boxes, and how to further your education on the biology of death.

### No Shush Movies

Hayley Rightnowar and Lauren Watson led our first no-shush movie and craft for Library Insiders. (right) The program was so successful that we’ll be booking a larger room next time.

### Snowman Pepakura Craft

Christina Racibozynski led patrons in creating a snowman using pepakura, a style of 3D papercrafting. (below)



### Programming

To give children and caregivers a different way to engage with each other, we introduced the **Imagination Station**. Families will encounter a Stay and Play or a Make and Take activity in alternating weeks. It has been great to see families interacting with our Stay and Play activity which this month included “Let’s Build Together”, a block activity and “Balance Buckets,” an activity that gave little ones a chance to develop their estimation skills as they weighed assorted items in our play scales. This new take on our craft table is something the entire department is excited about, and a good example of how we continue to assess and improve opportunities for patrons to use our spaces.

Makery programs continue to be popular, and the middle school Cake and Canvas program was a big success! Feeding middle schoolers continues to be a great way to get them to attend a program at EPL! Other programs of note included Ultimate Mad Libs, Awesome Axolotls, and Puzzle Palooza. Eighteen enthusiastic K-2<sup>nd</sup> graders attended the axolotl program, which included creating a habitat and learning about Mexican and Aztec folklore. One participant was so thrilled with her habitat that she brought it to school for show-and-tell the next day. Approximately 57 patrons dropped in to work on the variety of puzzles in the programming room. There were simple wooden puzzles, floor puzzles, and jigsaw puzzles with 100 or more pieces.



Stay and Play: Let’s Build Together



Awesome Axolotls

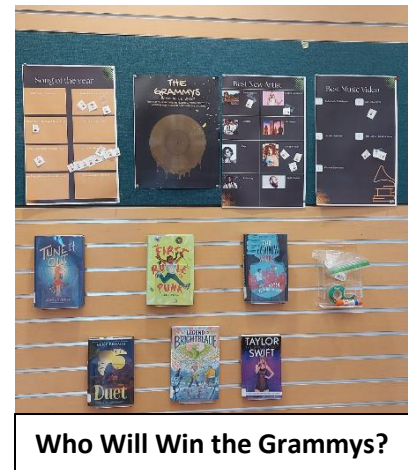
### Collection

Work continues on learning new systems, finetuning processes, and analyzing the collection to ensure we are meeting patron needs. Full-time Kids selectors switched to ordering primarily from Ingram after **Erin Emerick** reviewed the procedures with them. In addition, the Libraria representative reviewed that ordering system during the Kids department meeting.

## Middle School Happenings

**Angela Caringella** hosted Cakes and Canvases. Eleven budding artists attended. After the paintings were completed, they switched seats and shared what they liked about someone else's canvas. They all had such sweet things to say about each other.

The display in the middle school hangout space featured music books and a chance to vote which artist they thought would win the Grammys. Twenty-three votes were posted.



The winter volunteer program had 8 middle schoolers with a total of 24 hours. Tasks included pulling book lists, prepping supplies and prizes for WRP, setting/cleaning up programs, and folding booklists.

20 and 40 day prizes were sent to Churchville for the outreach Winter Reading Program. School librarian Maria Gargano provided the following feedback about the program this year:

*"We have great participation when we do the winter program because we can count school reading, and our teachers can support the program as well. The way it is set up to have the school personnel help manage is a great help for our kids. It is hard for our students to get to the other side of town to go to the library."*

## Special Project

Teacher Technology Kits have been updated and renamed to Program and Outreach Kits. The new kits contain items such as a Cubetto STEM bundle and Intelino Smart Train Starter set, which can be used at outreach STEM events and for in-house programming. All of the kits are now housed between two bays of shelves in the Kids' Workroom.

## Patron Story

Two girls who were participating in our new Stamp-portunities passive program were very excited to get a stamp for finding a book about a place they would like to visit. One found a book from New Mexico and shared when she got to New Mexico she would rent a car and drive to Mexico City so she could find Axolotls in the lake there. She was signed up for our Axolotl program and looking forward to it.



## January Marketing Topics included:

### Programming: MLK Jr. Day of Service

Honor the legacy of Dr. Martin Luther King Jr. by building community through service projects. Hand-on activities were available for all ages and ability levels. Focused around the theme of creating warmth. Over 100 were in attendance!

### Collections: DIY at EPL

Each turn of the calendar feels like the right time to tackle the projects that have been on the back burner. We have tools and digital equipment to use in the Library or take home with you. Creativebug offers online video of arts and crafts workshops and techniques that you can watch at your pace. Plus, the Library offers space to spread out, apart from distractions at home and get things done.

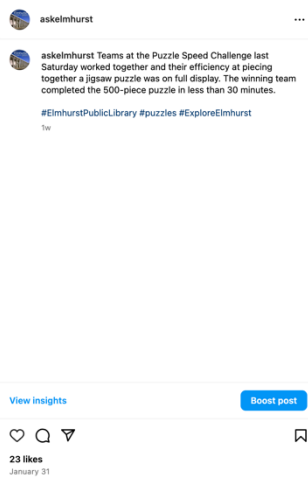
### Services: Book Club Services (video)

The Library can support your book club by offering multiple copies of titles in a variety of formats. Ask our staff or browse Readers Central on the 2<sup>nd</sup> floor. Learn more about Book Club services online at [elmlib.org/bookclub](http://elmlib.org/bookclub) or watch our latest Library Services video on local book clubs at [elmlib.org/youtube](http://elmlib.org/youtube)

### Inside Scoop: Year in Review (video)

Our Inside Scoop video takes a look back at 2024 and the eventful year we shared. Thank you for making great memories with us! [elmlib.org/youtube](http://elmlib.org/youtube)

*Here are some sample screenshots of our online presence from January:*



### All Ages Service Project

**MLK Day of Service**  
Monday, Jan. 20  
10:30 a.m.-3 p.m.  
Large Meeting Room • All Ages

Honor the legacy of Dr. Martin Luther King, Jr. by building community through service projects. We will have hands-on activities for all ages and ability levels, focused on the theme of creating warmth. Service hours will be available for students.

No registration required.

**Related:** Donate new/unused hats, scarves, and gloves during the month of January to provide some warmth for others. The collection box is located in the Library Lobby. Donations will go to [Warm Coats for Cool Kids](#).

### Partnering with D205

We're proud to partner with Elmhurst District 205! Through programs, field trips, and hands-on learning, our librarians connect students with EPL's vast resources, fostering lifelong readers and learners.

Check out the behind-the-scenes video from the district!

[Watch](#)

### Get It Done

Each turn of the calendar feels like the right time to tackle the projects that have been on the back burner: [digitizing analog home movies, photos, or music](#), [trying a hobby you've been curious about](#), or [getting around to making repairs or decluttering](#) around the house.

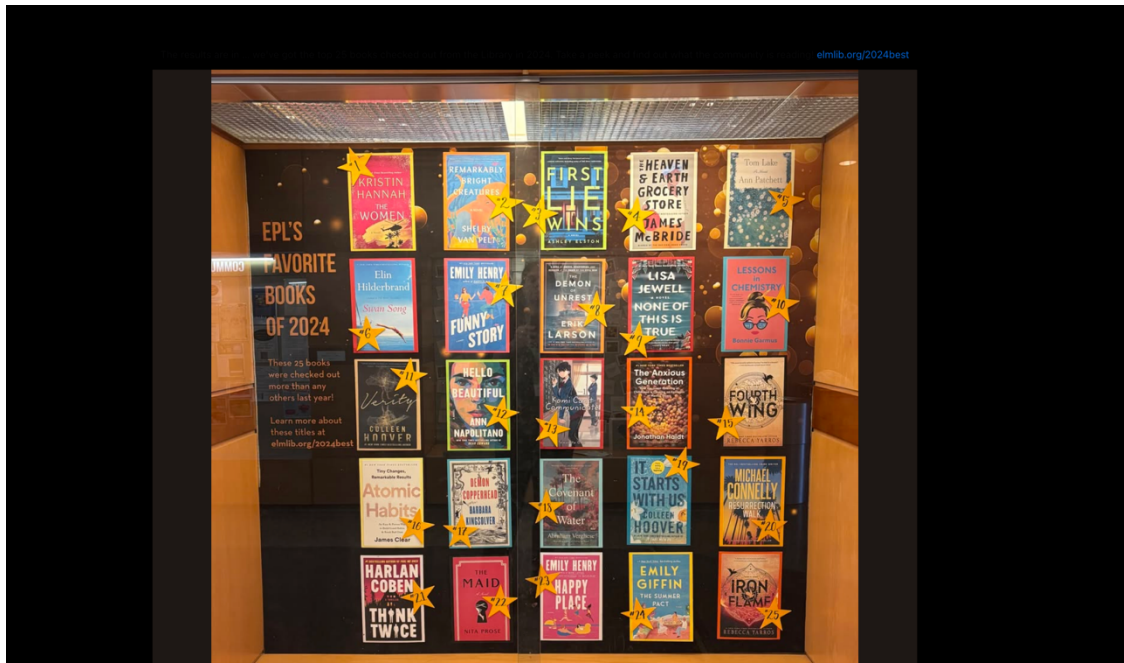
The Library is your partner when it comes to **DIY projects**. We have [digital equipment](#) and [kitchen tools](#) to use in the Library or to take home with you. Creativebug offers online video of [arts and crafts workshops](#) and techniques that you can watch at your own pace. Plus, the Library offers space — a [place to spread out](#), take stock of your project, and get things done.

## DIY @ EPL



In January, people watched your videos 18,926 times





Views **1,406,841** Reach **982,198**

Interactions **2,523** Link clicks **727**

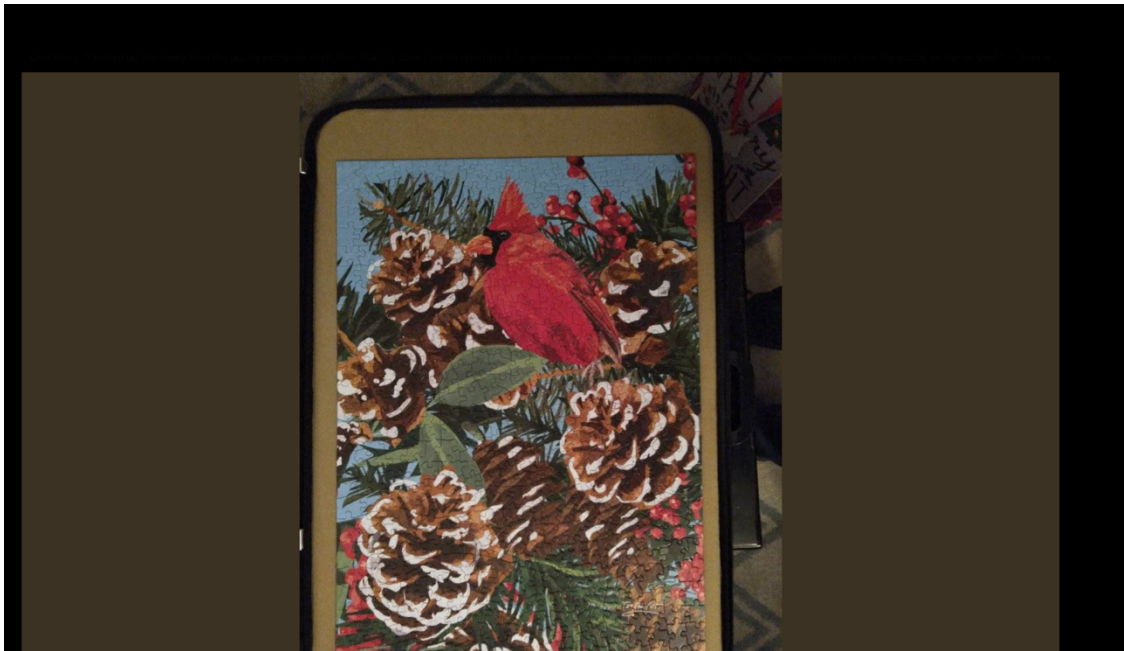
**Views**  
Followers vs. non-followers

0% Followers 100% Non-followers

**Interactions**

Reactions 1,370  
Comments 85  
Shares 126  
Saves 942

1.4 K 154 0 0 0 0



Views **6,625** Reach **4,913**

Interactions **26** Link clicks **--**

**Views**  
Followers vs. non-followers

13% Followers 87% Non-followers

**Interactions**

Reactions 25  
Comments 0  
Shares 1  
Saves 0

22 3 0 0 0 0

# MAKERY DEPARTMENT REPORT

JANUARY 2025

	This Month	Last Month	Last Year
People Counter	1,832	1,998	1,753
Equipment Reservations	195	457	164
3D Prints	86	77	83



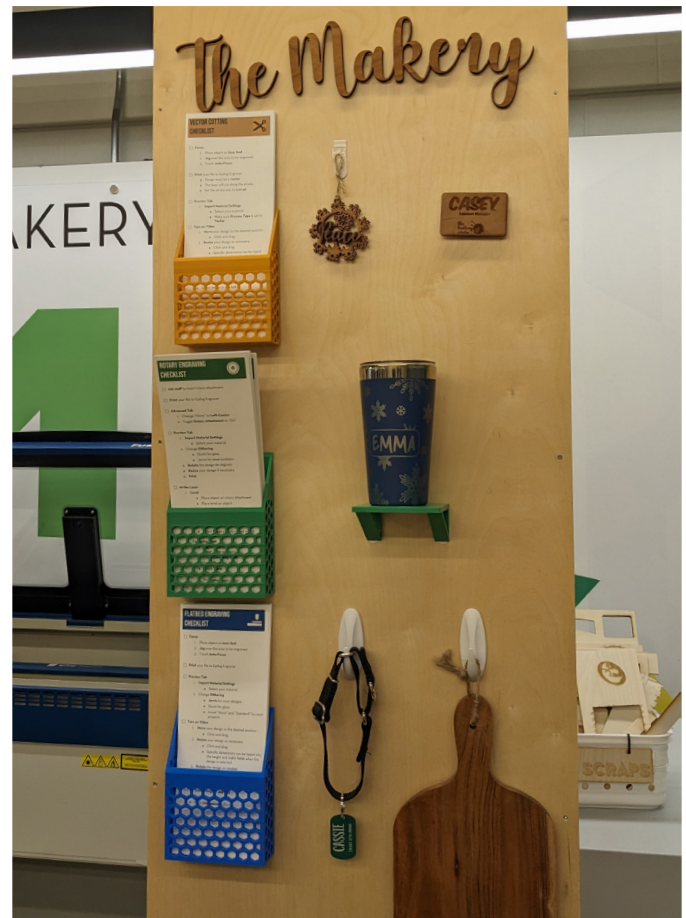
## New Serger Guide

Makery staff created a flip chart of serger examples that show the different stitches the serger is capable of. Each stitch is paired with threading instructions for that particular stitch and direct the user to the page in the user manual for details.



## Fiber Arts Pop Up

Makery staff Jen Kryczka and Angelina Mazenko hosted a pop-up program in the Lobby. They demonstrated the knitting machines and promoted fiber arts items available for checkout.



## Updated Laser Display

The new display features step-by-step checklists for the three most common uses of the laser. The checklists are color coordinated with their 3D printed holders and are accompanied by examples.



## Maker Spotlight

This family used the embroidery machine to make a crown for Lee's 1st birthday. Happy birthday, Lee!

# PROGRAM STATISTICS

January 2025

Adult Programs	Primary Event Type	Attendance	Sessions
Adult Book Discussion: <i>Pride and Prejudice</i> by Jane Austen	Book Discussion	12	1
Adult Book Discussion: <i>The First Ladies</i> : A Novel by Marie Benedict and Victoria Christopher Murray	Book Discussion	17	2
AI popup		20	1
American Mah Jongg: Open Play	Games	36	4
Android Basics	Technology	3	1
Art Therapy Night	Create	26	1
Bingo	Games	4	1
Bridge and Pinochle	Games	73	4
Canasta: Open Play	Games	53	4
Cash in on Decluttering	Consumer	98	1
Celebrate International Puzzle Day	Enrich	6	1
Celebrate the Lunar New Year	Enrich	27	1
Chair Yoga	Gather	46	2
Chamber Concert	Gather	71	1
Chocolate Desserts	Enrich	71	1
Ciao Italia	Enrich	8	1
Coloring for Mindfulness		2	1
Culture Club: Mississippi River Adventures	Enrich	33	1
Death Cafe	Enrich	10	1
Family History 101: Beginning Your Investigation	Enrich	8	1
Friday Features: As Good as It Gets	Movies	53	5
Getting Started with Streaming Services	Technology	4	1
Great Decisions	Enrich	13	1
Identity Theft Scams and Tips	Consumer	30	1
Illinois Libraries Present: Chicago Pizza: Past, Present & Future with Steve Dolinsky	Books and Authors	25	1
Illinois Libraries Present: Love and Laughs with Michelle Buteau	Books and Authors	5	1
In Stitches Needleworkers	Create	5	1
Interview Anxiety: What It Is and How to Manage It	Career & Job Hunting	8	1
Introduction to QuickBooks Online for Business	Business	6	1
iPhone iOS	Technology	11	1
Learn to Play American Mah Jongg	Enrich	20	1
Learn to Play Canasta	Enrich	10	1
LEGO Remembered: History and Values	Enrich	31	1
Library Insiders: Chair Yoga	Library Insiders	8	1
Library Insiders: Daytime Movie	Library Insiders	19	1
Memory Cafe: Winter Wonderland	Enrich, Inclusive, Seniors	0	1
MLK Day of Service	Enrich	103	1
Music of the 1990s	Common Connection	12	1
Next Chapter Book Club	Library Insiders	31	2
Outreach R@SC tech help	Community Outreach	10	1
Photoshop Elements	Technology	6	1
Puzzle Speed Challenge	Enrich	48	1
Resume Review	Career & Job Hunting	5	1
Retro Video Games	Enrich	8	1
Scrabble	Games	13	2



Sensory Self-Care	Create	19	2
Snowman Pepakura	Create	19	2
Staying Mentally Fit	Gather	7	1
The History of PC Video Games	Enrich, Games	6	1
Through the Eyes of the Hubble Telescope	Common Connection	34	1
Ukulele Circle	Gather	12	1
Winter Stitch-Along	Create	693	4
<b>TOTALS</b>		<b>1,898</b>	<b>74</b>
<b>Makery Program</b>			
	<b>Primary Event Type</b>	<b>Attendance</b>	<b>Sessions</b>
Makery Library of Extraordinary Things Pop-Up	Create	63	1
<b>TOTALS</b>		<b>63</b>	<b>1</b>
<b>Teen Programs</b>			
	<b>Primary Event Type</b>	<b>Attendance</b>	<b>Sessions</b>
New Year, New Me: Vision Board	Create	3	1
TAG Rescheduled	Teen Program	4	1
Teen Crafternoon: Shrinky Dink Flair Pins	Create	3	1
Timothy Christian Visit	Outreach	39	2
<b>TOTALS</b>		<b>49</b>	<b>5</b>
<b>Middle School Programs</b>			
	<b>Primary Event Type</b>	<b>Attendance</b>	<b>Sessions</b>
Middle School Hangout Passive & Pop-Up		15	1
<b>TOTALS</b>		<b>15</b>	<b>1</b>
<b>Kids' Library Programs</b>			
	<b>Primary Event Type</b>	<b>Attendance</b>	<b>Sessions</b>
Awesome Axolotls	Science	18	1
3D Printing	STEAM	12	1
After School Gaming	Games	18	1
Cake and Canvas	Create	11	1
Dig in to Play: Toddler Sensory Time		50	1
Drop-in Craft	STEAM	124	2
Kids' Chess Club	Games	18	1
Make an Origami Yoda	Create	8	1
Make with Me: Ice Painting	Makery	42	2
Mandarin/English Storytime	Storytime	26	1
Middle School Influencers	Middle School Influencers	2	1
Middle School Movie Night	Movies	2	1
Puzzle-Palooza	STEAM	57	1
Read to the Dogs	STEAM	31	1
Ultimate Mad Libs	Games	8	1
Homeschool Explorers	Homeschool	20	1
Scout Makery mugs	Outreach	5	1
Scout Makery visit buttons		16	1
Scout Visit Button making	Outreach	13	1
Scout Visit Digital Photography	Outreach	9	1
Scout Visit Makery keepsake box	Outreach	7	1
Scout Visit Makery sewing	Outreach	12	1
Pop-Up Storytime	Storytime	15	1
Baby Play Date	Family	0	1
C.I.T.Y. of Support Playgroup	Family	17	1
Family Sensory Hour	Family	19	1
Fun for 3s, 4s, and 5s	Storytime	57	4
Little Wigglers	Storytime	626	9

Mother Goose & Me	Storytime	84	4
OUTREACH Preschool AT Elmhurst Preparatory	Outreach	29	3
OUTREACH Preschool Madison Parent Event	Outreach	32	1
Romp & Rhyme	Storytime	307	8
Saturday STEM	STEAM	21	1
<b>TOTALS</b>		<b>1,716</b>	<b>58</b>
<b>Passive Programs</b>	<b>Primary Event Type</b>	<b>Attendance</b>	<b>Sessions</b>
<b>Adult Passive Programs:</b>			
2024 Year in Review (Online)		193	1
Recording of History of PC Gaming (Online)		49	1
Recording of Mississippi River Adventures (Online)		27	1
Recording of Cash in on Decluttering (Online)		13	1
Recording of Local Book Club Resources (Online)		74	1
Winter Reading		39	1
Puzzles:		32	1
Entertainment Station		23	5
<b>Kids' Passive Programs:</b>			
Craft Table-Passive		931	4
		<b>Attendance</b>	<b>Sessions</b>
<b>Adult Program Grand Total</b>		<b>2411</b>	<b>87</b>
Total Passive Program Statistics		450	12
Total Program Statistics		1,961	75
<b>Teen Program Grand Total</b>		<b>49</b>	<b>5</b>
Total Passive Program Statistics		0	0
Total Program Statistics		49	5
<b>Middle School Program Grand Total</b>		<b>15</b>	<b>1</b>
Total Passive Program Statistics		0	0
Total Program Statistics		15	1
<b>Kids' Program Grand Total</b>		<b>2,647</b>	<b>62</b>
Total Passive Program Statistics		931	4
Total Program Statistics		1,716	58
<b>Passive Program Total</b>		<b>1,381</b>	<b>16</b>
<b>Total Attendance</b>		<b>5,122</b>	
<b>Total Programs</b>			<b>155</b>

# STATISTICAL REPORT

## January 2025

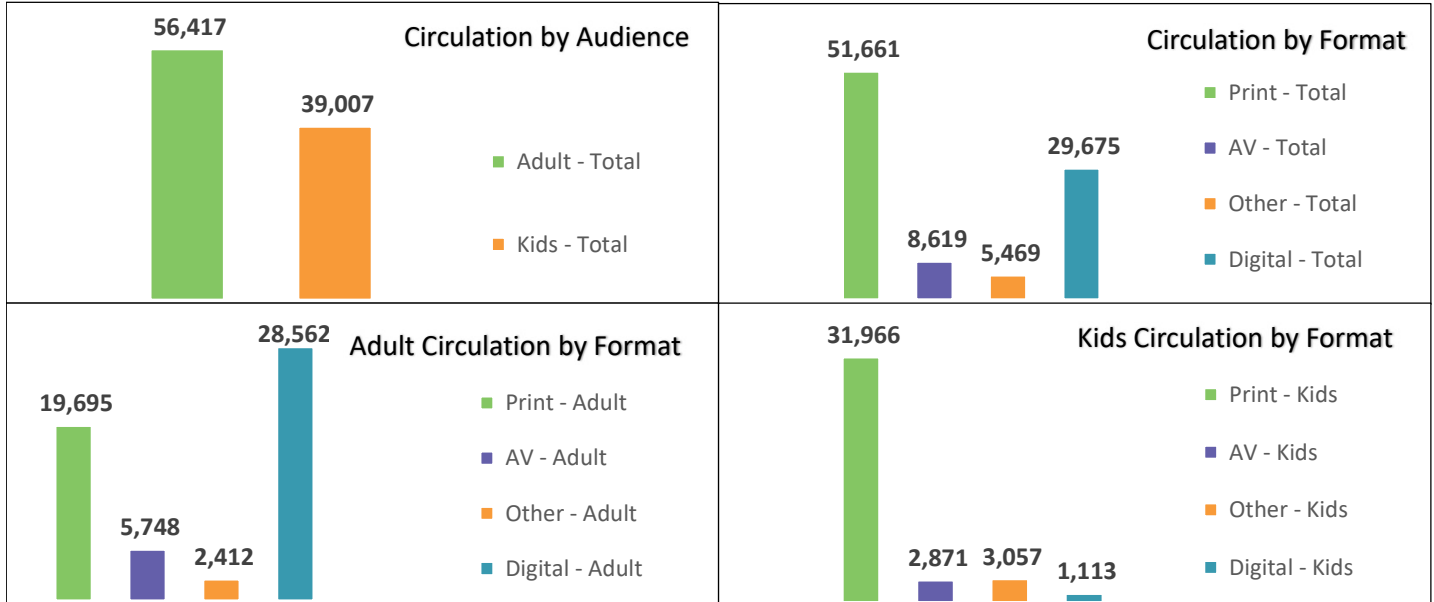
### Circulation

**Total Circulation**  
**96,814** ↑ 3%  
 93,550 last year  
**Card Holders**  
 25,908

**Library Card Usage**  
**9,683** ↑ 4%  
 9,299 last year

**Library Cards Issued**  
**Elmhurst** **209** ↑ 12%  
 (Issued) 187 last year  
**Reciprocal Borrower** **49** ↑ 2%  
 (Registered) 48 last year

**Interlibrary Loan**  
**Borrowed** **1,390** ↓ -5%  
 1,469 last year  
**Lent** **607** ↓ -17%  
 729 last year



### Technology Usage

**Public Computer Use**

**14,621** ↓ -6%  
 15,503 last year

**Website Visits**

**35,970** ↓ -18%  
 43,770 last year

**Self Checkout**

(% of checkouts)  
**52%** ↑ 4%  
 50% last year

**WiFi Sessions**

**20,189** ↓ -1%  
 20,429 last year

### Reference Queries

**Reference Questions Total**

**4,566** ↓ -3%  
 4,724 last year

**Reference Questions**

**Adult**  
**2,970** ↓ -13%  
 3,403 last year

**Kids**  
**1,596** ↑ 21%  
 1,321 last year

### Meeting Room Use

**Library Programs**

**155** ↓ -5%  
 164 last year

**Public Meetings**

**88** ↑ 17%  
 75 last year

**Group Study Rooms**

**2,437** ↑ 35%  
 1,802 last year

### Programs

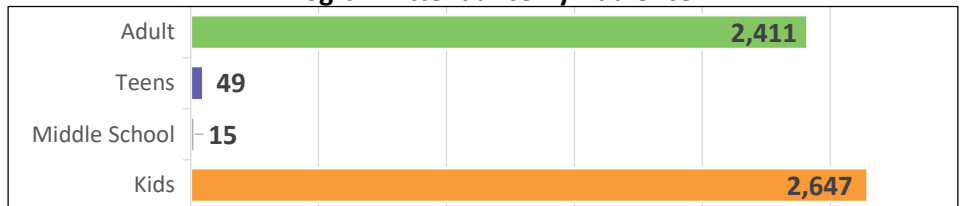
**Program Attendance**

**5,122** ↑ 3%  
 4,961 last year

**Library Programs**

**155** ↓ -5%  
 164 last year

**Program Attendance By Audience**



### Library Visits

**Total Visits**

**37,676** ↑ 10%  
 34,364 last year

**In House Visits**

**Makery** **1,832** ↑ 131%  
 793 last year

**Walk-In**  
**35,763** ↑ 10%  
 32,449 last year

**Drive-Up Visits**  
**1,913** ↓ 0%  
 1,915 last year

**Creative Studio** **109** ↑ 11%  
 98 last year

### Monthly Comparison

#### Total Circulation

96,814  3%  
93,550 last year

#### Adult Circulation

56,417  10%  
51,190 last year

#### Kids Circulation

39,007  -5%  
40,891 last year

#### ILL Borrowed from Other Libraries

1,390  -5%  
1,469 last year

#### Digital Material Circulation

29,675  29%  
22,929 last year

#### Databases

62,712  513%  
10,236 last year

#### Reference Questions Total

4,566  -3%  
4,724 last year

#### One on One Tutorials

44  16%  
38 last year

#### Number of Programs

155  -5%  
164 last year

#### Program Attendance

5,122  3%  
4,961 last year

#### In-Person Visitors

35,763  10%  
32,449 last year

#### Drive-Up Visitors

1,913  0%  
1,915 last year

### Year To Date Comparison

#### Total Circulation

96,814  3%  
93,550 last year

#### Adult Circulation

56,417  10%  
51,190 last year

#### Kids Circulation

39,007  -5%  
40,891 last year

#### ILL Borrowed from Other Libraries

1,390  -5%  
1,469 last year

#### Digital Material Circulation

29,675  29%  
22,929 last year

#### Databases

62,712  513%  
10,236 last year

#### Reference Questions Total

4,566  -3%  
4,724 last year

#### One on One Tutorials

44  16%  
38 last year

#### Number of Programs

155  -5%  
164 last year

#### Program Attendance

5,122  3%  
4,961 last year

#### In-Person Visitors

35,763  10%  
32,449 last year

#### Drive-Up Visitors

1,913  0%  
1,915 last year

## Collection Totals

### Books and Magazines

160,809

### Library of Extraordinary Things and Electronics

6,114

### Audio Visual

27,074

### Digital

176,948

## Notable Happenings in Circulation

- One *Cards for Kids* library card was issued in January.
- There are 40 active *Cards for Kids* library cards.
- One Non resident cards were purchased this month for a total of \$247.39.
- There are 134 active Non resident library cards (patrons living in unincorporated Elmhurst).
- We filled 5,414 holds this month.